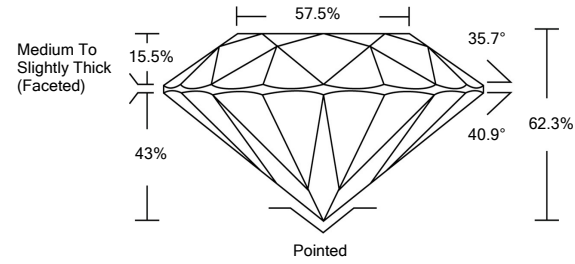




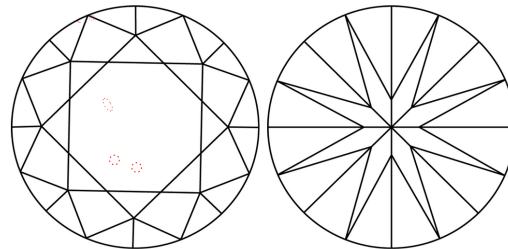
LG464112257

LABORATORY GROWN DIAMOND REPORT

PROPORTIONS

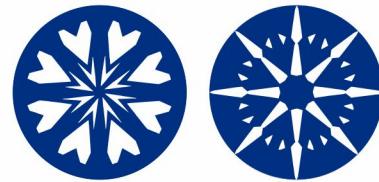


CLARITY CHARACTERISTICS



KEY TO SYMBOLS

Red symbols indicate internal characteristics. Green symbols indicate external characteristics.

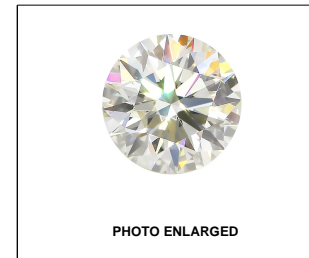


GRADING SCALES

Table with 5 columns for Color Grading Scale (CL, NC, FT, VLT, LT) and Clarity (10x) Grading Scale (FL, IF, VVS, VS, SI, I).

The laboratory grown diamond described in this Report (Report) has been graded, tested, analyzed, examined and/or inscribed by International Gemological Institute (IGI). A laboratory grown diamond is one that has essentially the same chemical, physical and optical properties as a mined diamond...

© INTERNATIONAL GEMOLOGICAL INSTITUTE, INC.



LABGROWN IGI LG464112257

LASERSCRIBESM

03/04/2021

IGI Report Number LG464112257

Shape and Cutting Style ROUND BRILLIANT

Measurements 8.42 - 8.45 x 5.26 mm

GRADING RESULTS

Carat Weight 2.31 CARATS

Color Grade F

Clarity Grade VS 2

Cut Grade IDEAL

ADDITIONAL GRADING INFORMATION

Polish EXCELLENT

Symmetry EXCELLENT

Fluorescence NONE

Inscription(s) LABGROWN IGI LG464112257

Comments: HEARTS & ARROWS

This Laboratory Grown Diamond was created by Chemical Vapor Deposition (CVD) growth process and may include post-growth treatment. Type IIa



IGI

Summary table of report details: IGI Report No. LG464112257, ROUND BRILLIANT, 8.42 - 8.45 x 5.26 mm, 2.31 CARATS, Color Grade F, VS 2, IDEAL, 62.3%, 57.5%, Medium To Slightly Thick (Faceted), Pointed, EXCELLENT, EXCELLENT, NONE, LABGROWN IGI LG464112257.

03/04/2021

IGI Report No. LG464112257

ROUND BRILLIANT

8.42 - 8.45 x 5.26 mm

2.31 CARATS

F

VS 2

IDEAL

62.3%

57.5%

Medium To Slightly Thick (Faceted)

Pointed

EXCELLENT

EXCELLENT

NONE

LABGROWN IGI

LG464112257

Comments: HEARTS & ARROWS

This Laboratory Grown Diamond was created by Chemical Vapor Deposition (CVD) growth process and may include post-growth treatment.

Type IIa

