



LABORATORY GROWN DIAMOND REPORT

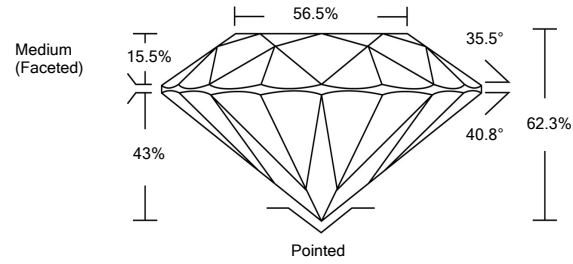
LG464190311

GRADING SCALES

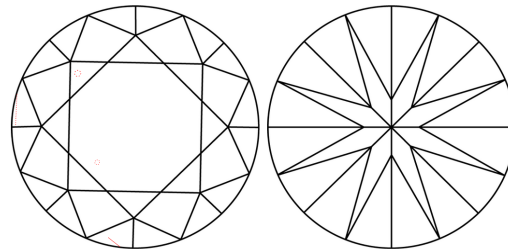
Table with 5 columns: COLOR GRADING SCALE (CL, NC, FT, VLT, LT), CLARITY (10x) GRADING SCALE (FL, IF, VVS, VS, SI, I). Includes sub-labels like COLORLESS D-F, NEAR COLORLESS G-J, etc.

The laboratory grown diamond described in this Report (Report) has been graded, tested, analyzed, examined and/or inscribed by International Gemological Institute (IGI). A laboratory grown diamond is one that has essentially the same chemical, physical and optical properties as a mined diamond...

PROPORTIONS

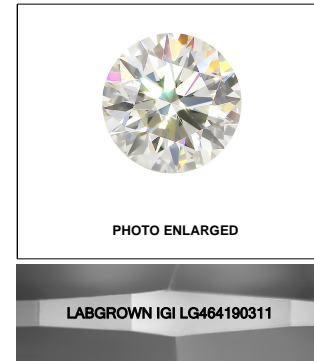
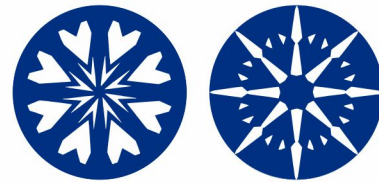


CLARITY CHARACTERISTICS



KEY TO SYMBOLS

Red symbols indicate internal characteristics. Green symbols indicate external characteristics.



03/09/2021

IGI Report Number LG464190311

Shape and Cutting Style ROUND BRILLIANT

Measurements 9.46 - 9.52 x 5.91 mm

GRADING RESULTS

Carat Weight 3.29 CARATS

Color Grade G

Clarity Grade VVS 2

Cut Grade IDEAL

ADDITIONAL GRADING INFORMATION

Polish EXCELLENT

Symmetry EXCELLENT

Fluorescence NONE

Inscription(s) LABGROWN IGI LG464190311

Comments: HEARTS & ARROWS

This Laboratory Grown Diamond was created by Chemical Vapor Deposition (CVD) growth process and may include post-growth treatment. Type IIa



03/09/2021 IGI Report No. LG464190311 ROUND BRILLIANT 9.46 - 9.52 x 5.91 mm 3.29 CARATS G VVS 2 IDEAL 62.3% 56.5% Medium (Faceted) Pointed EXCELLENT EXCELLENT NONE LABGROWN IGI LG464190311

03/09/2021

IGI Report Number LG464190311

Shape and Cutting Style ROUND BRILLIANT

Measurements 9.46 - 9.52 x 5.91 mm

GRADING RESULTS

Carat Weight 3.29 CARATS

Color Grade G

Clarity Grade VVS 2

Cut Grade IDEAL

ADDITIONAL GRADING INFORMATION

Polish EXCELLENT

Symmetry EXCELLENT

Fluorescence NONE

Inscription(s) LABGROWN IGI LG464190311

Comments: HEARTS & ARROWS

This Laboratory Grown Diamond was created by Chemical Vapor Deposition (CVD) growth process and may include post-growth treatment. Type IIa

