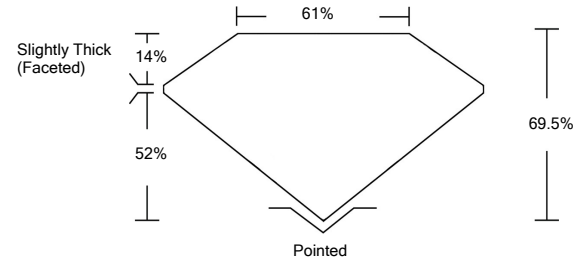




LG468109071

LABORATORY GROWN DIAMOND REPORT

PROPORTIONS

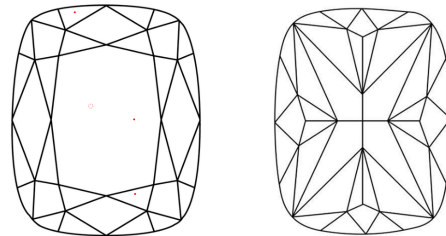


GRADING SCALES

Table with 5 columns for Color Grading Scale (CL, NC, FT, VLT, LT) and Clarity (10x) Grading Scale (FL, IF, VVS, VS, SI, I).

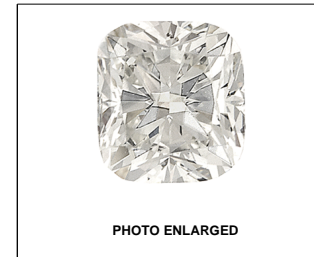
The laboratory grown diamond described in this Report (Report) has been graded, tested, analyzed, examined and/or inscribed by International Gemological Institute (IGI). A laboratory grown diamond is one that has essentially the same chemical, physical and optical properties as a mined diamond...

CLARITY CHARACTERISTICS



KEY TO SYMBOLS

Red symbols indicate internal characteristics. Green symbols indicate external characteristics.



LASERSCRIBESM

04/11/2021

IGI Report Number LG468109071

Shape and Cutting Style CUSHION MODIFIED BRILLIANT

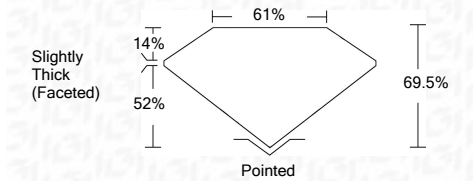
Measurements 9.81 x 8.23 x 5.72 mm

GRADING RESULTS

Carat Weight 3.59 CARATS

Color Grade I

Clarity Grade VS 1



ADDITIONAL GRADING INFORMATION

Polish EXCELLENT

Symmetry EXCELLENT

Fluorescence NONE

Inscription(s) LABGROWN IGI LG468109071

Comments: This Laboratory Grown Diamond was created by Chemical Vapor Deposition (CVD) growth process and may include post-growth treatment. Type IIa



IGI

Summary table of report details: 04/11/2021, IGI Report No. LG468109071, CUSHION MODIFIED BRILLIANT, 9.81 x 8.23 x 5.72 mm, 3.59 CARATS, Color Grade I, Clarity Grade VS 1, Depth 69.5%, Table 61%, Slightly Thick (Faceted), Pointed, EXCELLENT Polish, EXCELLENT Symmetry, NONE Fluorescence, LABGROWN IGI LG468109071 Inscription(s).

This Laboratory Grown Diamond was created by Chemical Vapor Deposition (CVD) growth process and may include post-growth treatment. Type IIa

