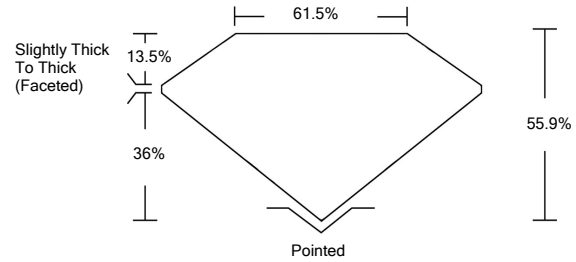




LG468169240

LABORATORY GROWN DIAMOND REPORT

PROPORTIONS



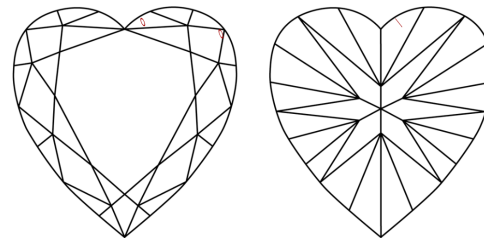
GRADING SCALES

Table with 5 columns for Color Grading Scale (CL, NC, FT, VLT, LT) and Clarity (10x) Grading Scale (FL, IF, VVS, VS, SI, I). Includes sub-labels like COLORLESS D-F, NEAR COLORLESS G-J, FAINT K-M, VERY LIGHT N-R, LIGHT S-Z, etc.

The laboratory grown diamond described in this Report (Report) has been graded, tested, analyzed, examined and/or inscribed by International Gemological Institute (IGI). A laboratory grown diamond is one that has essentially the same chemical, physical and optical properties as a mined diamond...

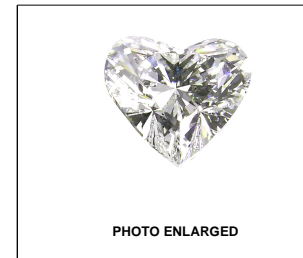
© INTERNATIONAL GEMOLOGICAL INSTITUTE, INC.

CLARITY CHARACTERISTICS



KEY TO SYMBOLS

Red symbols indicate internal characteristics. Green symbols indicate external characteristics.



LABGROWN IGI LG468169240

LASERSCRIBESM

03/19/2021

IGI Report Number LG468169240

Shape and Cutting Style HEART BRILLIANT

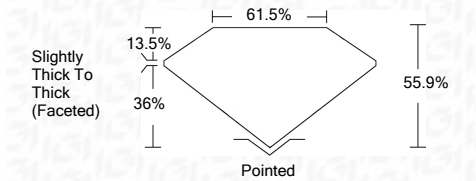
Measurements 5.67 x 7.21 x 4.03 mm

GRADING RESULTS

Carat Weight 1.00 CARAT

Color Grade E

Clarity Grade VS 2



ADDITIONAL GRADING INFORMATION

Polish EXCELLENT

Symmetry EXCELLENT

Fluorescence NONE

Inscription(s) LABGROWN IGI LG468169240

Comments: As Grown - No indication of post-growth treatment.

This Laboratory Grown Diamond was created by High Pressure High Temperature (HPHT) growth process. Type II



IGI

03/19/2021 IGI Report No. LG468169240 HEART BRILLIANT 5.67 x 7.21 x 4.03 mm Carat Weight 1.00 CARAT Color Grade E Clarity Grade VS 2 Depth 55.9% Table 61.5% Girdle Slightly Thick To Thick (Faceted) Culet Pointed Polish EXCELLENT Symmetry EXCELLENT Fluorescence NONE Inscription(s) LABGROWN IGI LG468169240

Comments: As Grown - No indication of post-growth treatment. This Laboratory Grown Diamond was created by High Pressure High Temperature (HPHT) growth process. Type II

