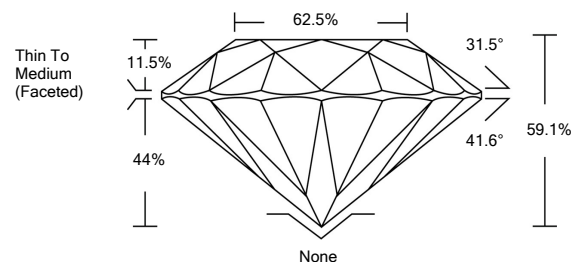




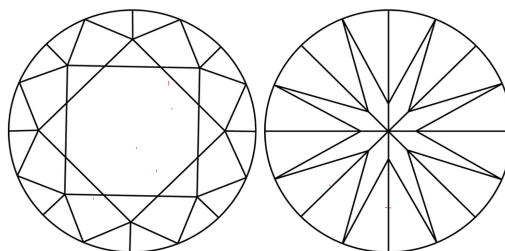
LABORATORY GROWN DIAMOND REPORT

LG468173334

PROPORTIONS



CLARITY CHARACTERISTICS

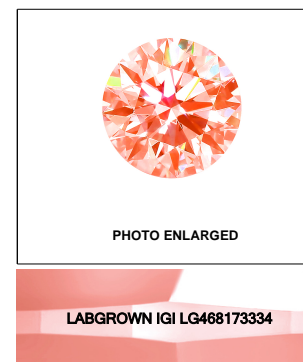


KEY TO SYMBOLS

Red symbols indicate internal characteristics.
Green symbols indicate external characteristics.

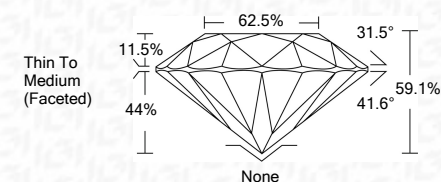
03/18/2021	
IGI Report Number	LG468173334
Shape and Cutting Style	ROUND BRILLIANT
Measurements	6.69 - 6.73 x 3.96 mm
GRADING RESULTS	
Carat Weight	1.07 CARAT
Color Grade	FANCY INTENSE PINK ORANGE
Clarity Grade	VS 2
Cut Grade	VERY GOOD
ADDITIONAL GRADING INFORMATION	
Polish	VERY GOOD
Symmetry	VERY GOOD
Fluorescence	STRONG
Inscription(s)	LABGROWN IGI LG468173334

Comments: This Laboratory Grown Diamond was created by Chemical Vapor Deposition (CVD) process Type IIa, Indications of post-growth treatment.



LASERSCRIBESM

03/18/2021	
IGI Report Number	LG468173334
Shape and Cutting Style	ROUND BRILLIANT
Measurements	6.69 - 6.73 x 3.96 mm
GRADING RESULTS	
Carat Weight	1.07 CARAT
Color Grade	FANCY INTENSE PINK ORANGE
Clarity Grade	VS 2
Cut Grade	VERY GOOD



ADDITIONAL GRADING INFORMATION

Polish	VERY GOOD
Symmetry	VERY GOOD
Fluorescence	STRONG
Inscription(s)	LABGROWN IGI LG468173334

Comments: This Laboratory Grown Diamond was created by Chemical Vapor Deposition (CVD) process Type IIa, Indications of post-growth treatment.



IGI

03/18/2021	
IGI Report No LG468173334	
ROUND BRILLIANT	1.07 CARAT
6.69 - 6.73 x 3.96 mm	FANCY INTENSE PINK ORANGE
Carat Weight	VS 2
Color Grade	VERY GOOD
Clarity Grade	59.1%
Depth	62.5%
Table	Thin To Medium (Faceted)
Girdle	None
Culet	VERY GOOD
Polish	VERY GOOD
Symmetry	STRONG
Fluorescence	LABGROWN IGI LG468173334
Inscription(s)	
Comments: This Laboratory Grown Diamond was created by Chemical Vapor Deposition (CVD) process Type IIa, Indications of post-growth treatment.	