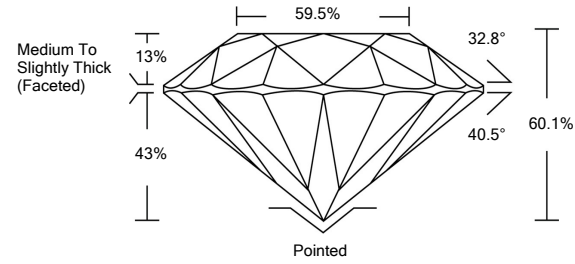




LG468186233

LABORATORY GROWN DIAMOND REPORT

PROPORTIONS

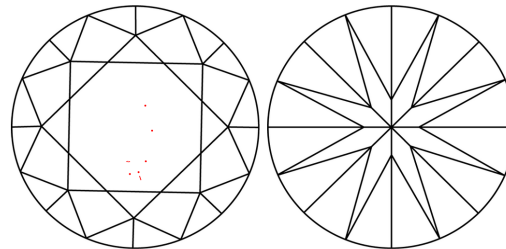


GRADING SCALES

Table with 5 columns for Color Grading Scale (CL to LT) and Clarity (10x) Grading Scale (FL to I).

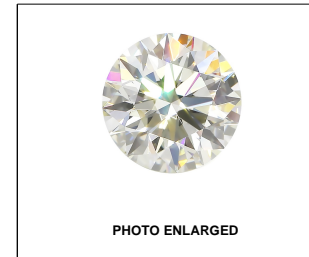
The laboratory grown diamond described in this Report (Report) has been graded, tested, analyzed, examined and/or inscribed by International Gemological Institute (IGI). A laboratory grown diamond is one that has essentially the same chemical, physical and optical properties as a mined diamond...

CLARITY CHARACTERISTICS



KEY TO SYMBOLS

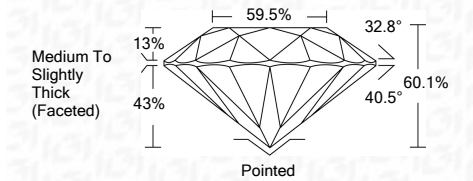
Red symbols indicate internal characteristics. Green symbols indicate external characteristics.



LABGROWN IGI LG468186233

LASERSCRIBESM

03/30/2021 IGI Report Number LG468186233 Shape and Cutting Style ROUND BRILLIANT Measurements 9.57 - 9.61 x 5.76 mm GRADING RESULTS Carat Weight 3.31 CARATS Color Grade G Clarity Grade VS 1 Cut Grade EXCELLENT



ADDITIONAL GRADING INFORMATION

Polish EXCELLENT Symmetry EXCELLENT Fluorescence NONE Inscription(s) LABGROWN IGI LG468186233

Comments: This Laboratory Grown Diamond was created by Chemical Vapor Deposition (CVD) growth process and may include post-growth treatment. Type IIa



IGI

03/30/2021 IGI Report No. LG468186233 ROUND BRILLIANT 9.57 - 9.61 x 5.76 mm 3.31 CARATS G VS 1 EXCELLENT 60.1% 59.5% Medium To Slightly Thick (Faceted) Pointed EXCELLENT EXCELLENT NONE LABGROWN IGI LG468186233

