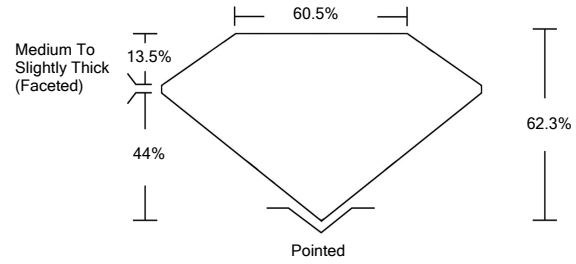




LG472169046

LABORATORY GROWN DIAMOND REPORT

PROPORTIONS



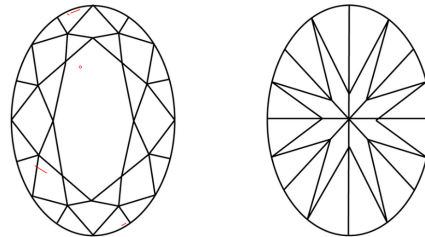
GRADING SCALES

Table with 5 columns for Color Grading Scale (CL, NC, FT, VLT, LT) and 5 columns for Clarity (10x) Grading Scale (FL, IF, VVS, VS, SI, I).

The laboratory grown diamond described in this Report (Report) has been graded, tested, analyzed, examined and/or inscribed by International Gemological Institute (IGI). A laboratory grown diamond is one that has essentially the same chemical, physical and optical properties as a mined diamond...

© INTERNATIONAL GEMOLOGICAL INSTITUTE, INC.

CLARITY CHARACTERISTICS



KEY TO SYMBOLS

Red symbols indicate internal characteristics. Green symbols indicate external characteristics.

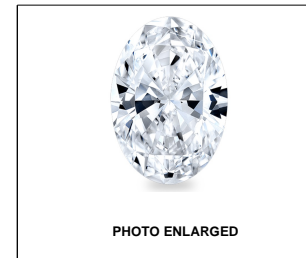


PHOTO ENLARGED



LASERSCRIBE<sup>SM</sup>

04/16/2021

IGI Report Number LG472169046

Shape and Cutting Style OVAL BRILLIANT

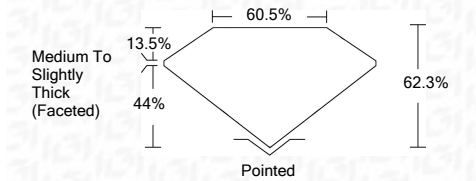
Measurements 9.93 x 7.30 x 4.55 mm

GRADING RESULTS

Carat Weight 2.06 CARATS

Color Grade J

Clarity Grade VS 2



ADDITIONAL GRADING INFORMATION

Polish EXCELLENT

Symmetry VERY GOOD

Fluorescence NONE

Inscription(s) LABGROWN IGI LG472169046

Comments: This Laboratory Grown Diamond was created by Chemical Vapor Deposition (CVD) growth process and may include post-growth treatment. Type IIa



IGI

04/16/2021 IGI Report No. LG472169046 OVAL BRILLIANT 9.93 x 7.30 x 4.55 mm 2.06 CARATS J VS 2 62.3% 60.5% Medium To Slightly Thick (Faceted) Pointed EXCELLENT VERY GOOD NONE LABGROWN IGI LG472169046

This Laboratory Grown Diamond was created by Chemical Vapor Deposition (CVD) growth process and may include post-growth treatment. Type IIa

