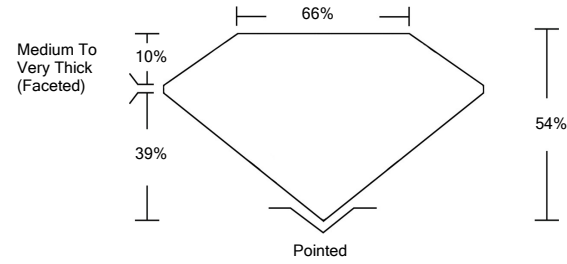




LG472173009

LABORATORY GROWN DIAMOND REPORT

PROPORTIONS



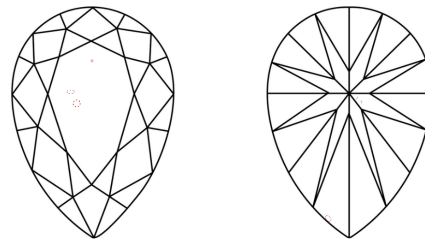
GRADING SCALES

Table with 5 columns for Color Grading Scale (CL, NC, FT, VLT, LT) and 5 columns for Clarity (10x) Grading Scale (FL, IF, VVS, VS, SI, I).

The laboratory grown diamond described in this Report (Report) has been graded, tested, analyzed, examined and/or inscribed by International Gemological Institute (IGI). A laboratory grown diamond is one that has essentially the same chemical, physical and optical properties as a mined diamond...

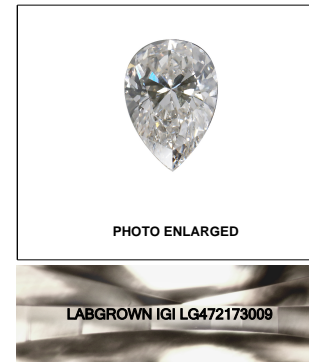
© INTERNATIONAL GEMOLOGICAL INSTITUTE, INC.

CLARITY CHARACTERISTICS



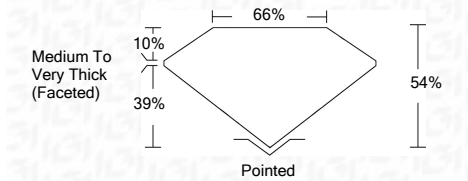
KEY TO SYMBOLS

Red symbols indicate internal characteristics. Green symbols indicate external characteristics.



LASERSCRIBE SM

05/10/2021 IGI Report Number LG472173009 Shape and Cutting Style PEAR BRILLIANT Measurements 8.63 x 5.82 x 3.14 mm GRADING RESULTS Carat Weight 1.00 CARAT Color Grade E Clarity Grade VS 2



ADDITIONAL GRADING INFORMATION

Polish EXCELLENT Symmetry VERY GOOD Fluorescence NONE Inscription(s) LABGROWN IGI LG472173009

Comments: This Laboratory Grown Diamond was created by Chemical Vapor Deposition (CVD) growth process and may include post-growth treatment. Type IIa



05/10/2021 IGI Report No. LG472173009 PEAR BRILLIANT 8.63 x 5.82 x 3.14 mm 1.00 CARAT E VS 2 54% 66% Medium To Very Thick (Faceted) Pointed EXCELLENT VERY GOOD NONE LABGROWN IGI LG472173009

This Laboratory Grown Diamond was created by Chemical Vapor Deposition (CVD) growth process and may include post-growth treatment. Type IIa

