



LG472199293

LABORATORY GROWN DIAMOND REPORT

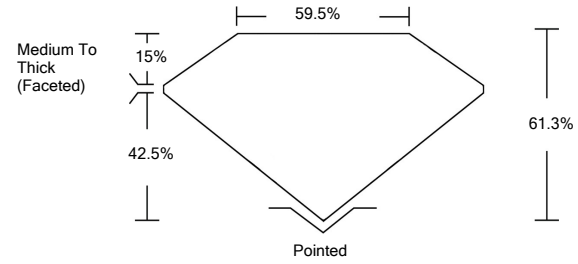
07/06/2021
IGI Report Number LG472199293
Shape and Cutting Style PEAR BRILLIANT
Measurements 10.68 X 6.88 X 4.22 MM

GRADING RESULTS
Carat Weight 1.78 CARAT
Color Grade I
Clarity Grade VS 1

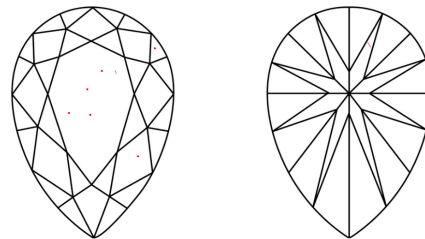
ADDITIONAL GRADING INFORMATION
Polish EXCELLENT
Symmetry EXCELLENT
Fluorescence NONE
Inscription(s) LABGROWN IGI LG472199293

Comments: This Laboratory Grown Diamond was created by Chemical Vapor Deposition (CVD) growth process and may include post-growth treatment. Type IIa

PROPORTIONS



CLARITY CHARACTERISTICS



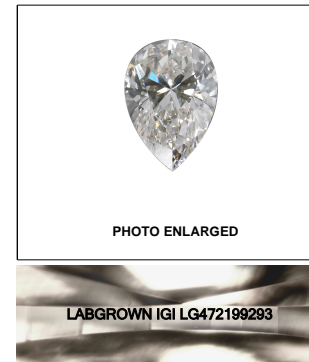
KEY TO SYMBOLS

Red symbols indicate internal characteristics. Green symbols indicate external characteristics.

GRADING SCALES

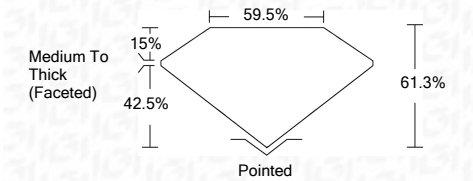
Table with 5 columns for Color Grading Scale (CL, NC, FT, VLT, LT) and Clarity (10x) Grading Scale (FL, IF, VVS, VS, SI, I).

The laboratory grown diamond described in this Report (Report) has been graded, tested, analyzed, examined and/or inscribed by International Gemological Institute (IGI). A laboratory grown diamond is one that has essentially the same chemical, physical and optical properties as a mined diamond...



LASERSCRIBE SM

07/06/2021
IGI Report Number LG472199293
Shape and Cutting Style PEAR BRILLIANT
Measurements 10.68 X 6.88 X 4.22 MM
GRADING RESULTS
Carat Weight 1.78 CARAT
Color Grade I
Clarity Grade VS 1



ADDITIONAL GRADING INFORMATION
Polish EXCELLENT
Symmetry EXCELLENT
Fluorescence NONE
Inscription(s) LABGROWN IGI LG472199293

Comments: This Laboratory Grown Diamond was created by Chemical Vapor Deposition (CVD) growth process and may include post-growth treatment. Type IIa



IGI

07/06/2021
IGI Report No. LG472199293
PEAR BRILLIANT
Carat Weight 1.78 CARAT
Color Grade I
Clarity Grade VS 1
Depth 61.3%
Table 69.5%
Grade Medium To Thick (Faceted)
Culet Pointed
Polish EXCELLENT
Symmetry EXCELLENT
Fluorescence NONE
Inscription(s) LABGROWN IGI LG472199293
Comments: This Laboratory Grown Diamond was created by Chemical Vapor Deposition (CVD) growth process and may include post-growth treatment. Type IIa