



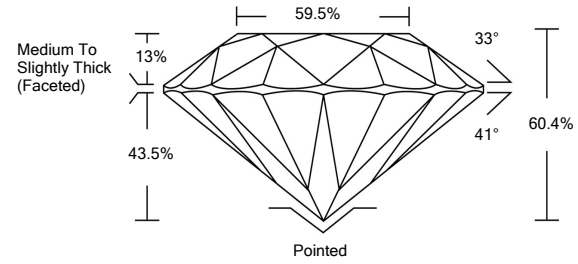
**LABORATORY GROWN DIAMOND REPORT**

LG472199668

**GRADING SCALES**

|                             |                              |                             |                        |                   |           |   |
|-----------------------------|------------------------------|-----------------------------|------------------------|-------------------|-----------|---|
| COLOR GRADING SCALE         | CL                           | NC                          | FT                     | VL                | LT        |   |
|                             | COLORLESS D-F                | NEAR COLORLESS G-J          | FAINT K-M              | VERY LIGHT N-R    | LIGHT S-Z |   |
| CLARITY (10x) GRADING SCALE | FL                           | IF                          | VVS                    | VS                | SI        | I |
|                             | FLAWLESS INTERNALLY FLAWLESS | VERY VERY SLIGHTLY INCLUDED | VERY SLIGHTLY INCLUDED | SLIGHTLY INCLUDED | INCLUDED  |   |

**PROPORTIONS**



05/03/2021

IGI Report Number **LG472199668**

Shape and Cutting Style **ROUND BRILLIANT**

Measurements **9.71 - 9.73 x 5.87 mm**

**GRADING RESULTS**

Carat Weight **3.39 CARATS**

Color Grade **I**

Clarity Grade **SI 1**

Cut Grade **IDEAL**

05/03/2021

IGI Report Number **LG472199668**

Shape and Cutting Style **ROUND BRILLIANT**

Measurements **9.71 - 9.73 x 5.87 mm**

**GRADING RESULTS**

Carat Weight **3.39 CARATS**

Color Grade **I**

Clarity Grade **SI 1**

Cut Grade **IDEAL**

**ADDITIONAL GRADING INFORMATION**

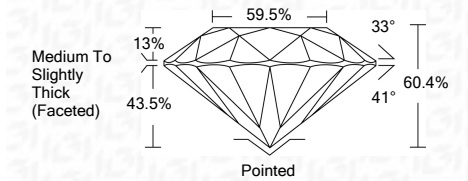
Polish **EXCELLENT**

Symmetry **EXCELLENT**

Fluorescence **NONE**

Inscription(s) **LABGROWN IGI LG472199668**

Comments: This Laboratory Grown Diamond was created by Chemical Vapor Deposition (CVD) growth process and may include post-growth treatment.  
Type IIa



**ADDITIONAL GRADING INFORMATION**

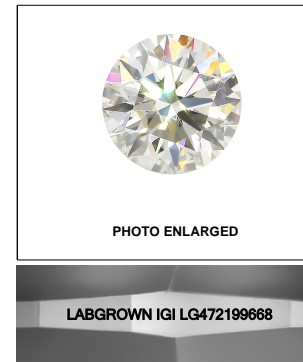
Polish **EXCELLENT**

Symmetry **EXCELLENT**

Fluorescence **NONE**

Inscription(s) **LABGROWN IGI LG472199668**

Comments: This Laboratory Grown Diamond was created by Chemical Vapor Deposition (CVD) growth process and may include post-growth treatment.  
Type IIa



**LASERSCRIBE<sup>SM</sup>**

The laboratory grown diamond described in this Report ("Report") has been graded, tested, analyzed, examined and/or inscribed by International Gemological Institute (I.G.I.). A laboratory grown diamond is one that has essentially the same chemical, physical and optical properties as a mined diamond, with the exception of being grown by man (a manufactured product). I.G.I. employs and utilizes those techniques and equipment currently available to I.G.I., including, without limitation, 10X magnification, corrected triplet loupe, binocular microscope, master color comparison stones, non-contact-optical measuring device, Diamond Sure™, Diamond View™, Spectrophotometer and such other instruments and/or processes as deemed appropriate by I.G.I. This Report includes advanced security features. A duly accredited gemologist or jeweler can advise you with respect to the importance of and interrelationship between cut, color, clarity and carat weight.  
**THIS REPORT IS NEITHER A GUARANTEE, VALUATION, NOR APPRAISAL OF THE GEMSTONE DESCRIBED HEREIN. PLEASE REVIEW THE LIMITATIONS AND RESTRICTIONS SET FORTH ONLINE. FOR ADDITIONAL INFORMATION, IMPORTANT LIMITATIONS AND DISCLAIMERS, PLEASE GO TO WWW.IGI.ORG OR CALL 1-888-BUY-IGI.**

© INTERNATIONAL GEMOLOGICAL INSTITUTE, INC.



|            |  |             |   |      |       |       |       |                                    |         |           |           |      |                          |
|------------|--|-------------|---|------|-------|-------|-------|------------------------------------|---------|-----------|-----------|------|--------------------------|
| 05/03/2021 | IGI Report No. LG472199668   | 3.39 CARATS | I | SI 1 | IDEAL | 60.4% | 60.5% | Medium To Slightly Thick (Faceted) | Pointed | EXCELLENT | EXCELLENT | NONE | LABGROWN IGI LG472199668 |
|            | ROUND BRILLIANT  |             |   |      |       |       |       |                                    |         |           |           |      |                          |
|            | 9.71 - 9.73 x 5.87 mm  |             |   |      |       |       |       |                                    |         |           |           |      |                          |
|            | Carat Weight   |             |   |      |       |       |       |                                    |         |           |           |      |                          |
|            | Color Grade  |             |   |      |       |       |       |                                    |         |           |           |      |                          |
|            | Clarity Grade  |             |   |      |       |       |       |                                    |         |           |           |      |                          |
|            | Cut Grade  |             |   |      |       |       |       |                                    |         |           |           |      |                          |
|            | Depth  |             |   |      |       |       |       |                                    |         |           |           |      |                          |
|            | Table  |             |   |      |       |       |       |                                    |         |           |           |      |                          |
|            | Girdle   |             |   |      |       |       |       |                                    |         |           |           |      |                          |
|            | Culet  |             |   |      |       |       |       |                                    |         |           |           |      |                          |
|            | Polish   |             |   |      |       |       |       |                                    |         |           |           |      |                          |
|            | Symmetry   |             |   |      |       |       |       |                                    |         |           |           |      |                          |
|            | Fluorescence   |             |   |      |       |       |       |                                    |         |           |           |      |                          |
|            | Inscription(s)   |             |   |      |       |       |       |                                    |         |           |           |      |                          |
|            | Comments:  |             |   |      |       |       |       |                                    |         |           |           |      |                          |
|            | This Laboratory Grown Diamond was created by Chemical Vapor Deposition (CVD) growth process and may include post-growth treatment. |             |   |      |       |       |       |                                    |         |           |           |      |                          |
|            | Type IIa   |             |   |      |       |       |       |                                    |         |           |           |      |                          |