



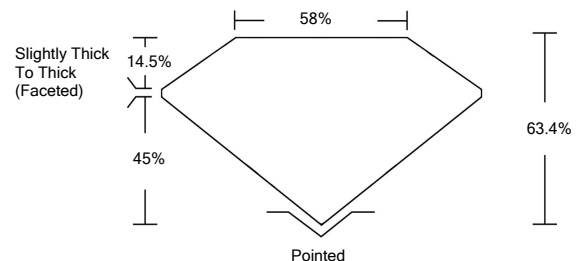
LG474106428

**LABORATORY GROWN DIAMOND REPORT**

05/21/2021	
IGI Report Number	<b>LG474106428</b>
Shape and Cutting Style	<b>PEAR BRILLIANT</b>
Measurements	<b>8.47 x 5.66 x 3.59 mm</b>
<b>GRADING RESULTS</b>	
Carat Weight	<b>1.04 CARAT</b>
Color Grade	<b>J</b>
Clarity Grade	<b>VVS 2</b>
<b>ADDITIONAL GRADING INFORMATION</b>	
Polish	<b>EXCELLENT</b>
Symmetry	<b>EXCELLENT</b>
Fluorescence	<b>NONE</b>
Inscription(s)	<b>LABGROWN IGI LG474106428</b>

Comments: As Grown - No indication of post-growth treatment.  
This Laboratory Grown Diamond was created by High Pressure High Temperature (HPHT) growth process.  
Type II  
Faint Yellowish Green

**PROPORTIONS**



**GRADING SCALES**

COLOR GRADING SCALE	CL	NC	FT	VL	LT	
	COLORLESS D-F	NEAR COLORLESS G-J	FAINT K-M	VERY LIGHT N-R	LIGHT S-Z	
CLARITY (10x) GRADING SCALE	FL	IF	VVS	VS	SI	I
	FLAWLESS INTERNALLY FLAWLESS	VERY VERY SLIGHTLY INCLUDED	VERY SLIGHTLY INCLUDED	SLIGHTLY INCLUDED	SLIGHTLY INCLUDED	INCLUDED

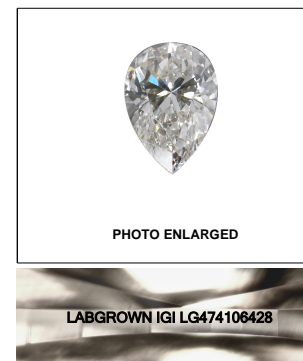
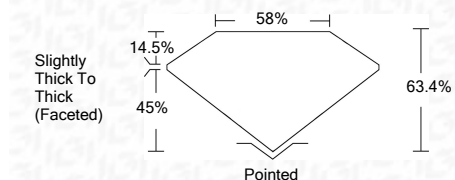


PHOTO ENLARGED

LABGROWN IGI LG474106428

LASERSCRIBE<sup>SM</sup>

05/21/2021	
IGI Report Number	<b>LG474106428</b>
Shape and Cutting Style	<b>PEAR BRILLIANT</b>
Measurements	<b>8.47 x 5.66 x 3.59 mm</b>
<b>GRADING RESULTS</b>	
Carat Weight	<b>1.04 CARAT</b>
Color Grade	<b>J</b>
Clarity Grade	<b>VVS 2</b>



<b>ADDITIONAL GRADING INFORMATION</b>	
Polish	<b>EXCELLENT</b>
Symmetry	<b>EXCELLENT</b>
Fluorescence	<b>NONE</b>
Inscription(s)	<b>LABGROWN IGI LG474106428</b>

Comments: As Grown - No indication of post-growth treatment.  
This Laboratory Grown Diamond was created by High Pressure High Temperature (HPHT) growth process.  
Type II  
Faint Yellowish Green

The laboratory grown diamond described in this Report ("Report") has been graded, tested, analyzed, examined and/or inscribed by International Gemological Institute (IGI). A laboratory grown diamond is one that has essentially the same chemical, physical and optical properties as a mined diamond, with the exception of being grown by man (a manufactured product). IGI employs and utilizes those techniques and equipment currently available to IGI, including, without limitation, 10X magnification, corrected triplet loupe, binocular microscope, master color comparison stones, non-contact-optical measuring device, Diamond Sure™, Diamond View™, Spectrophotometer and such other instruments and/or processes as deemed appropriate by IGI. This Report includes advanced security features. A duly accredited gemologist or jeweler can advise you with respect to the importance of and interrelationship between cut, color, clarity and carat weight.  
**THIS REPORT IS NEITHER A GUARANTEE, VALUATION, NOR APPRAISAL OF THE GEMSTONE DESCRIBED HEREIN. PLEASE REVIEW THE LIMITATIONS AND RESTRICTIONS SET FORTH ONLINE. FOR ADDITIONAL INFORMATION, IMPORTANT LIMITATIONS AND DISCLAIMERS, PLEASE GO TO WWW.IGI.ORG OR CALL 1-888-BUY-IGIS.**

© INTERNATIONAL GEMOLOGICAL INSTITUTE, INC.



**IGI**

05/21/2021	
IGI Report No. LG474106428	
<b>PEAR BRILLIANT</b>	
8.47 x 5.66 x 3.59 mm	
1.04 CARAT	<b>J</b>
VVS 2	
63.4%	
58%	
Slightly Thick To Thick (Faceted)	
Pointed	
EXCELLENT	
EXCELLENT	
NONE	
LABGROWN IGI	
LG474106428	

Comments:  
As Grown - No indication of post-growth treatment.  
This Laboratory Grown Diamond was created by High Pressure High Temperature (HPHT) growth process.  
Type II  
Faint Yellowish Green