



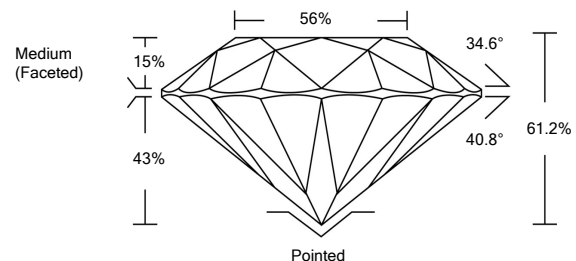
LG474109411

LABORATORY GROWN DIAMOND REPORT

05/24/2021	
IGI Report Number	LG474109411
Shape and Cutting Style	ROUND BRILLIANT
Measurements	6.65 - 6.67 x 4.08 mm
GRADING RESULTS	
Carat Weight	1.09 CARAT
Color Grade	K
Clarity Grade	VVS 1
Cut Grade	IDEAL
ADDITIONAL GRADING INFORMATION	
Polish	EXCELLENT
Symmetry	EXCELLENT
Fluorescence	NONE
Inscription(s)	LABGROWN IGI LG474109411

Comments: As Grown - No indication of post-growth treatment.
This Laboratory Grown Diamond was created by High Pressure High Temperature (HPHT) growth process.
Type II

PROPORTIONS



GRADING SCALES

COLOR GRADING SCALE	CL	NC	FT	VLT	LT	
	COLORLESS D-F	NEAR COLORLESS G-J	FAINT K-M	VERY LIGHT N-R	LIGHT S-Z	
CLARITY (10x) GRADING SCALE	FL	IF	VVS	VS	SI	I
	FLAWLESS INTERNALLY FLAWLESS	VERY VERY SLIGHTLY INCLUDED	VERY SLIGHTLY INCLUDED	SLIGHTLY INCLUDED	INCLUDED	

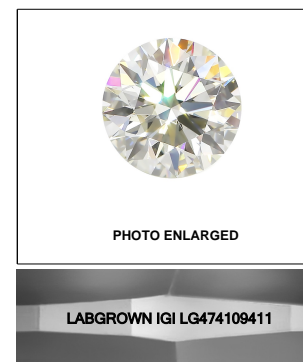
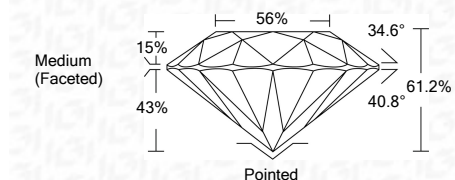


PHOTO ENLARGED
LASERSCRIBESM

05/24/2021	
IGI Report Number	LG474109411
Shape and Cutting Style	ROUND BRILLIANT
Measurements	6.65 - 6.67 x 4.08 mm
GRADING RESULTS	
Carat Weight	1.09 CARAT
Color Grade	K
Clarity Grade	VVS 1
Cut Grade	IDEAL



ADDITIONAL GRADING INFORMATION	
Polish	EXCELLENT
Symmetry	EXCELLENT
Fluorescence	NONE
Inscription(s)	LABGROWN IGI LG474109411

Comments: As Grown - No indication of post-growth treatment.
This Laboratory Grown Diamond was created by High Pressure High Temperature (HPHT) growth process.
Type II

The laboratory grown diamond described in this Report ("Report") has been graded, tested, analyzed, examined and/or inscribed by International Gemological Institute (IGI). A laboratory grown diamond is one that has essentially the same chemical, physical and optical properties as a mined diamond, with the exception of being grown by man (a manufactured product). IGI employs and utilizes those techniques and equipment currently available to IGI, including, without limitation, 10X magnification, corrected triplet loupe, binocular microscope, master color comparison stones, non-contact-optical measuring device, Diamond Sure™, Diamond View™, Spectrophotometer and such other instruments and/or processes as deemed appropriate by IGI. This Report includes advanced security features. A duly accredited gemologist or jeweler can advise you with respect to the importance of and interrelationship between cut, color, clarity and carat weight.
THIS REPORT IS NEITHER A GUARANTEE, VALUATION, NOR APPRAISAL OF THE GEMSTONE DESCRIBED HEREIN. PLEASE REVIEW THE LIMITATIONS AND RESTRICTIONS SET FORTH ONLINE. FOR ADDITIONAL INFORMATION, IMPORTANT LIMITATIONS AND DISCLAIMERS, PLEASE GO TO WWW.IGI.ORG OR CALL 1-888-BUY-IGI.

© INTERNATIONAL GEMOLOGICAL INSTITUTE, INC.



05/24/2021	
IGI Report No. LG474109411	
ROUND BRILLIANT	
6.65 - 6.67 x 4.08 mm	
Carat Weight	1.09 CARAT
Color Grade	K
Clarity Grade	VVS 1
Cut Grade	IDEAL
Depth	61.2%
Table	56%
Grade	Medium (Faceted)
Culet	Pointed
Polish	EXCELLENT
Symmetry	EXCELLENT
Fluorescence	NONE
Inscription(s)	LABGROWN IGI LG474109411
Comments:	As Grown - No indication of post-growth treatment. This Laboratory Grown Diamond was created by High Pressure High Temperature (HPHT) growth process. Type II