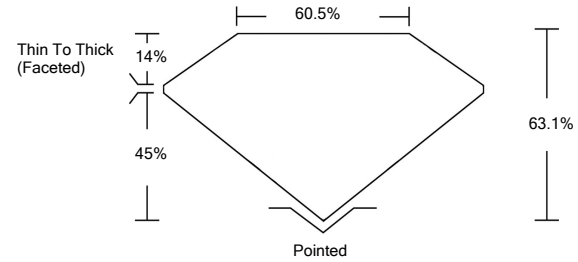




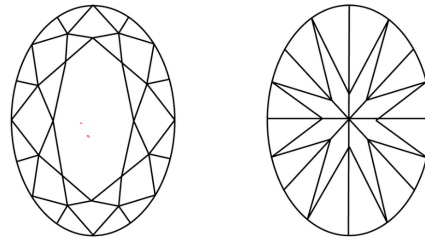
LG474112181

LABORATORY GROWN DIAMOND REPORT

PROPORTIONS



CLARITY CHARACTERISTICS



KEY TO SYMBOLS

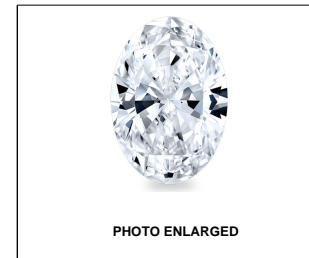
Red symbols indicate internal characteristics. Green symbols indicate external characteristics.

GRADING SCALES

Table with 5 columns for Color Grading Scale (CL, NC, FT, VLT, LT) and Clarity (10x) Grading Scale (FL, IF, VVS, VS, SI, I).

The laboratory grown diamond described in this Report (Report) has been graded, tested, analyzed, examined and/or inscribed by International Gemological Institute (IGI). A laboratory grown diamond is one that has essentially the same chemical, physical and optical properties as a mined diamond...

© INTERNATIONAL GEMOLOGICAL INSTITUTE, INC.



LASERSCRIBESM

05/05/2021

IGI Report Number LG474112181

Shape and Cutting Style OVAL BRILLIANT

Measurements 10.82 x 7.99 x 5.04 mm

GRADING RESULTS

Carat Weight 2.76 CARATS

Color Grade G

Clarity Grade VS 1

ADDITIONAL GRADING INFORMATION

Polish EXCELLENT

Symmetry VERY GOOD

Fluorescence NONE

Inscription(s) LABGROWN IGI LG474112181

Comments: This Laboratory Grown Diamond was created by Chemical Vapor Deposition (CVD) growth process and may include post-growth treatment. Type IIa



IGI

Summary table of diamond characteristics: 05/05/2021, IGI Report No. LG474112181, OVAL BRILLIANT, 10.82 x 7.99 x 5.04 mm, 2.76 CARATS, VS 1, 63.1%, 60.5%, Pointed, EXCELLENT, VERY GOOD, NONE, LABGROWN IGI LG474112181.

This Laboratory Grown Diamond was created by Chemical Vapor Deposition (CVD) growth process and may include post-growth treatment. Type IIa

