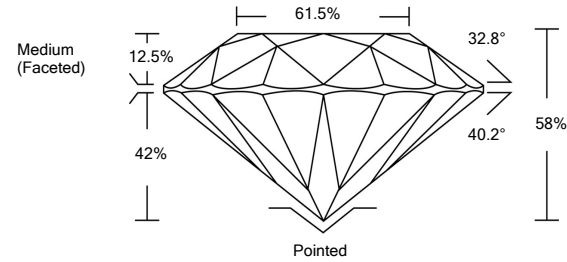




LG474112296

LABORATORY GROWN DIAMOND REPORT

PROPORTIONS

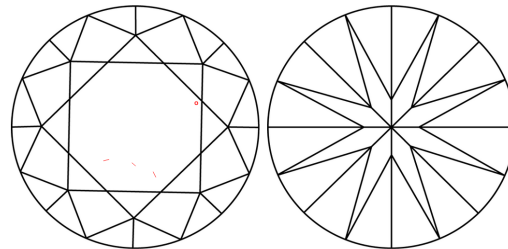


GRADING SCALES

Table with 5 columns for Color Grading Scale (CL to LT) and Clarity (10x) Grading Scale (FL to I).

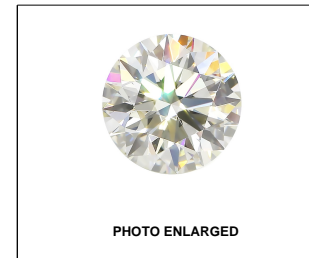
The laboratory grown diamond described in this Report (Report) has been graded, tested, analyzed, examined and/or inscribed by International Gemological Institute (IGI). A laboratory grown diamond is one that has essentially the same chemical, physical and optical properties as a mined diamond...

CLARITY CHARACTERISTICS



KEY TO SYMBOLS

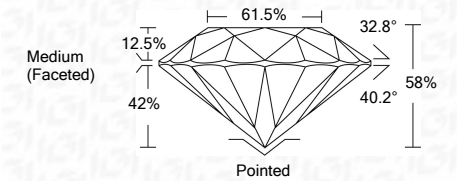
Red symbols indicate internal characteristics. Green symbols indicate external characteristics.



LABGROWN IGI LG474112296

LASERSCRIBE<sup>SM</sup>

05/11/2021 IGI Report Number LG474112296 Shape and Cutting Style ROUND BRILLIANT Measurements 9.42 - 9.45 x 5.47 mm GRADING RESULTS Carat Weight 3.00 CARATS Color Grade K Clarity Grade VS 1 Cut Grade EXCELLENT



ADDITIONAL GRADING INFORMATION

Polish EXCELLENT Symmetry EXCELLENT Fluorescence NONE Inscription(s) LABGROWN IGI LG474112296

Comments: This Laboratory Grown Diamond was created by Chemical Vapor Deposition (CVD) growth process and may include post-growth treatment. Type IIa



IGI

05/11/2021 IGI Report No. LG474112296 ROUND BRILLIANT 9.42 - 9.45 x 5.47 mm 3.00 CARATS K VS 1 EXCELLENT 58% 61.5% Medium (Faceted) Polished EXCELLENT EXCELLENT NONE LABGROWN IGI LG474112296

THIS DOCUMENT WAS PRODUCED WITH THE FOLLOWING SECURITY MEASURES: SPECIAL DOCUMENT PAPER, INK SCREENS, WATERMARK BACKGROUND DESIGNS, HOLOGRAM AND OTHER SECURITY FEATURES NOT LISTED AND DO EXCEED DOCUMENT SECURITY INDUSTRY GUIDELINES.