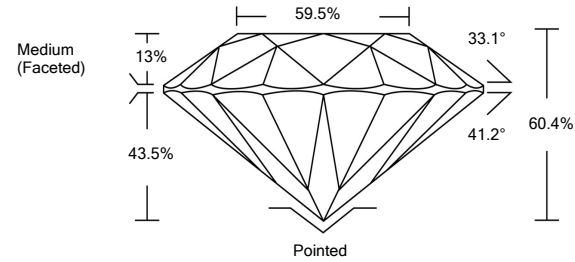




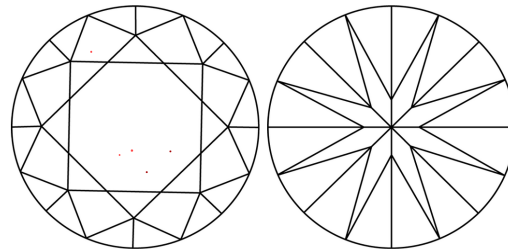
LABORATORY GROWN DIAMOND REPORT

LG474128445

PROPORTIONS



CLARITY CHARACTERISTICS



KEY TO SYMBOLS

Red symbols indicate internal characteristics.
Green symbols indicate external characteristics.

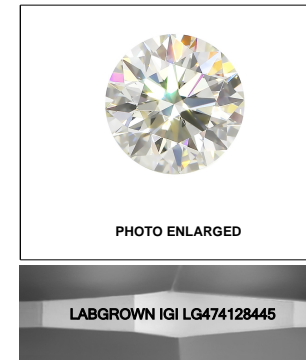
GRADING SCALES

COLOR GRADING SCALE	CL	NC	FT	VL	LT	
COLORLESS D-F		NEAR COLORLESS G-J	FAINT K-M	VERY LIGHT N-R	LIGHT S-Z	
CLARITY (10x) GRADING SCALE	FL	IF	VVS	VS	SI	I
FLAWLESS INTERNALLY FLAWLESS		VERY VERY SLIGHTLY INCLUDED	VERY SLIGHTLY INCLUDED	SLIGHTLY INCLUDED		INCLUDED

The laboratory grown diamond described in this Report (Report) has been graded, tested, analyzed, examined and/or inscribed by International Gemological Institute (IGI). A laboratory grown diamond is one that has essentially the same chemical, physical and optical properties as a mined diamond, with the exception of being grown by man (a manufactured product). IGI employs and utilizes those techniques and equipment currently available to IGI, including, without limitation, 10X magnification, corrected triplet loupe, binocular microscope, master color comparison stones, non-contact-optical measuring device, Diamond Sure™, Diamond View™, Spectrophotometer and such other instruments and/or processes as deemed appropriate by IGI. This Report includes advanced security features. A duly accredited gemologist or jeweler can advise you with respect to the importance of and interrelationship between cut, color, clarity and carat weight.

THIS REPORT IS NEITHER A GUARANTEE, VALUATION, NOR APPRAISAL OF THE GEMSTONE DESCRIBED HEREIN. PLEASE REVIEW THE LIMITATIONS AND RESTRICTIONS SET FORTH ONLINE. FOR ADDITIONAL INFORMATION, IMPORTANT LIMITATIONS AND DISCLAIMERS, PLEASE GO TO WWW.IGI.ORG OR CALL 1-888-BUY-IGIS.

© INTERNATIONAL GEMOLOGICAL INSTITUTE, INC.



LABGROWN IGI LG474128445

LASERSCRIBESM

05/13/2021

IGI Report Number **LG474128445**

Shape and Cutting Style **ROUND BRILLIANT**

Measurements **6.81 - 6.83 x 4.12 mm**

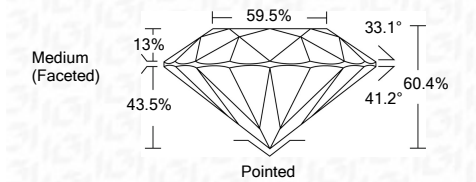
GRADING RESULTS

Carat Weight **1.17 CARAT**

Color Grade **J**

Clarity Grade **VVS 2**

Cut Grade **IDEAL**



ADDITIONAL GRADING INFORMATION

Polish **EXCELLENT**

Symmetry **EXCELLENT**

Fluorescence **NONE**

Inscription(s) **LABGROWN IGI LG474128445**

Comments: This Laboratory Grown Diamond was created by Chemical Vapor Deposition (CVD) growth process and may include post-growth treatment.
Type IIa



IGI

05/13/2021	IGI Report No. LG474128445	1.17 CARAT	J	Pointed	EXCELLENT	EXCELLENT	NONE	LABGROWN IGI LG474128445	Comments: This Laboratory Grown Diamond was created by Chemical Vapor Deposition (CVD) growth process and may include post-growth treatment. Type IIa
IGI Report No. LG474128445	ROUND BRILLIANT	6.81 - 6.83 x 4.12 mm	VVS 2	IDEAL	EXCELLENT	EXCELLENT	NONE	LABGROWN IGI LG474128445	
Carat Weight	6.81 - 6.83 x 4.12 mm	1.17 CARAT	Color Grade	IDEAL	EXCELLENT	EXCELLENT	NONE	LABGROWN IGI LG474128445	
Clarity Grade	6.81 - 6.83 x 4.12 mm	1.17 CARAT	Cut Grade	IDEAL	EXCELLENT	EXCELLENT	NONE	LABGROWN IGI LG474128445	
Depth	6.81 - 6.83 x 4.12 mm	1.17 CARAT	Color Grade	IDEAL	EXCELLENT	EXCELLENT	NONE	LABGROWN IGI LG474128445	
Table	6.81 - 6.83 x 4.12 mm	1.17 CARAT	Cut Grade	IDEAL	EXCELLENT	EXCELLENT	NONE	LABGROWN IGI LG474128445	
Grade	6.81 - 6.83 x 4.12 mm	1.17 CARAT	Color Grade	IDEAL	EXCELLENT	EXCELLENT	NONE	LABGROWN IGI LG474128445	
Culet	6.81 - 6.83 x 4.12 mm	1.17 CARAT	Cut Grade	IDEAL	EXCELLENT	EXCELLENT	NONE	LABGROWN IGI LG474128445	
Polish	6.81 - 6.83 x 4.12 mm	1.17 CARAT	Color Grade	IDEAL	EXCELLENT	EXCELLENT	NONE	LABGROWN IGI LG474128445	
Symmetry	6.81 - 6.83 x 4.12 mm	1.17 CARAT	Cut Grade	IDEAL	EXCELLENT	EXCELLENT	NONE	LABGROWN IGI LG474128445	

