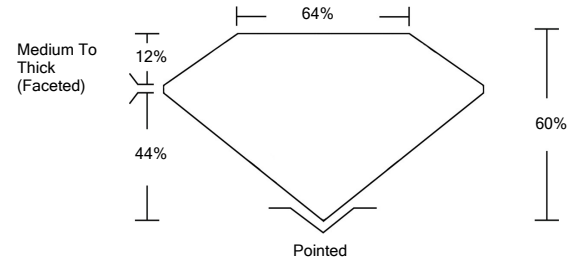




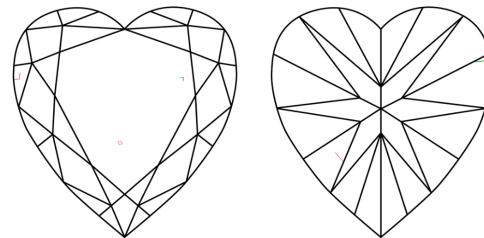
LG474129813

LABORATORY GROWN DIAMOND REPORT

PROPORTIONS



CLARITY CHARACTERISTICS



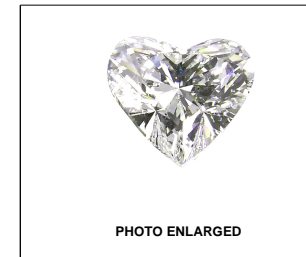
KEY TO SYMBOLS

Red symbols indicate internal characteristics. Green symbols indicate external characteristics.

GRADING SCALES

Table with 5 columns for Color Grading Scale (CL, NC, FT, VLT, LT) and Clarity (10x) Grading Scale (FL, IF, VVS, VS, SI, I). Includes descriptions like 'COLORLESS D-F', 'NEAR COLORLESS G-J', etc.

The laboratory grown diamond described in this Report (Report) has been graded, tested, analyzed, examined and/or inscribed by International Gemological Institute (IGI). A laboratory grown diamond is one that has essentially the same chemical, physical and optical properties as a mined diamond...



LASERSCRIBE<sup>SM</sup>

05/15/2021

IGI Report Number LG474129813

Shape and Cutting Style HEART BRILLIANT

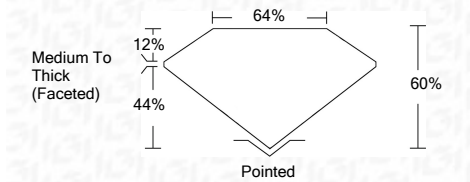
Measurements 8.06 x 8.54 x 5.12 mm

GRADING RESULTS

Carat Weight 2.01 CARATS

Color Grade H

Clarity Grade VS 1



ADDITIONAL GRADING INFORMATION

Polish EXCELLENT

Symmetry VERY GOOD

Fluorescence NONE

Inscription(s) LABGROWN IGI LG474129813

Comments: This Laboratory Grown Diamond was created by Chemical Vapor Deposition (CVD) growth process and may include post-growth treatment. Type IIa



IGI

05/15/2021 IGI Report No. LG474129813 HEART BRILLIANT 8.06 x 8.54 x 5.12 mm 2.01 CARATS H VS 1 60% 64% Medium To Thick (Faceted) EXCELLENT VERY GOOD NONE LABGROWN IGI LG474129813

This Laboratory Grown Diamond was created by Chemical Vapor Deposition (CVD) growth process and may include post-growth treatment. Type IIa

