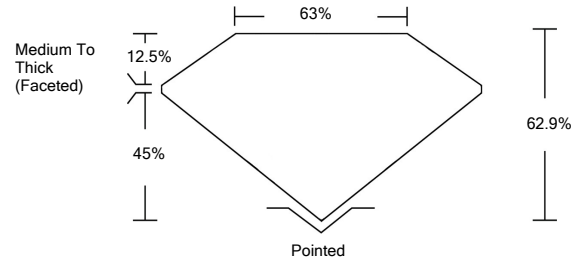




LG476154849

LABORATORY GROWN DIAMOND REPORT

PROPORTIONS

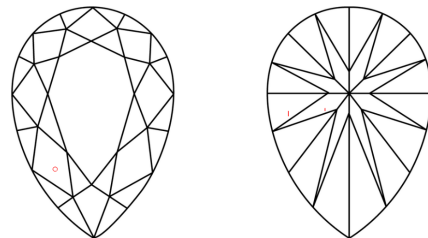


GRADING SCALES

Table with 5 columns for Color Grading Scale (CL, NC, FT, VLT, LT) and Clarity (10x) Grading Scale (FL, IF, VVS, VS, SI, I). Includes sub-labels like 'COLORLESS D-F', 'NEAR COLORLESS G-J', etc.

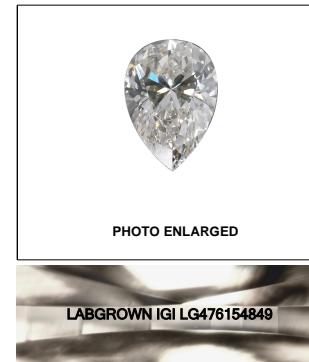
The laboratory grown diamond described in this Report (Report) has been graded, tested, analyzed, examined and/or inscribed by International Gemological Institute (IGI). A laboratory grown diamond is one that has essentially the same chemical, physical and optical properties as a mined diamond...

CLARITY CHARACTERISTICS

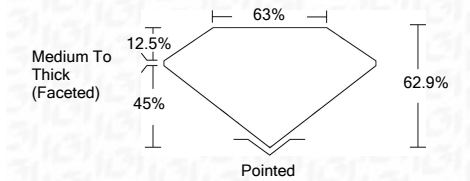


KEY TO SYMBOLS

Red symbols indicate internal characteristics. Green symbols indicate external characteristics.



05/17/2021 IGI Report Number LG476154849 Shape and Cutting Style PEAR BRILLIANT Measurements 8.81 x 5.58 x 3.51 mm GRADING RESULTS Carat Weight 1.00 CARAT Color Grade J Clarity Grade VS 1



ADDITIONAL GRADING INFORMATION

Polish VERY GOOD Symmetry EXCELLENT Fluorescence NONE Inscription(s) LABGROWN IGI LG476154849

Comments: This Laboratory Grown Diamond was created by Chemical Vapor Deposition (CVD) growth process and may include post-growth treatment. Type IIa



05/17/2021 IGI Report No. LG476154849 PEAR BRILLIANT 8.81 x 5.58 x 3.51 mm 1.00 CARAT J VS 1 62.9% 63% Medium To Thick (Faceted) Pointed VERY GOOD EXCELLENT NONE LABGROWN IGI LG476154849

This Laboratory Grown Diamond was created by Chemical Vapor Deposition (CVD) growth process and may include post-growth treatment. Type IIa

