



LG478108475

LABORATORY GROWN DIAMOND REPORT

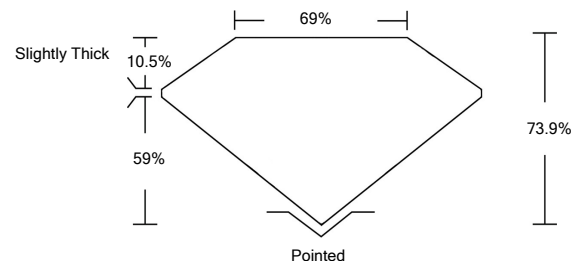
06/11/2021
 IGI Report Number **LG478108475**
 Shape and Cutting Style **CUT CORNERED RECTANGULAR MODIFIED BRILLIANT**
 Measurements **8.92 x 6.63 x 4.90 mm**
GRADING RESULTS
 Carat Weight **2.37 CARATS**
 Color Grade **J**
 Clarity Grade **VS 2**

ADDITIONAL GRADING INFORMATION

Polish **EXCELLENT**
 Symmetry **EXCELLENT**
 Fluorescence **NONE**
 Inscription(s) **LABGROWN IGI LG478108475**

Comments: This Laboratory Grown Diamond was created by Chemical Vapor Deposition (CVD) growth process and may include post-growth treatment.
 Type IIa

PROPORTIONS



GRADING SCALES

COLOR GRADING SCALE	CL	NC	FT	VL	LT	
	COLORLESS D-F	NEAR COLORLESS G-J	FAINT K-M	VERY LIGHT N-R	LIGHT S-Z	
CLARITY (10x) GRADING SCALE	FL	IF	VVS	VS	SI	I
	FLAWLESS INTERNALLY FLAWLESS	VERY VERY SLIGHTLY INCLUDED	VERY SLIGHTLY INCLUDED	SLIGHTLY INCLUDED	INCLUDED	

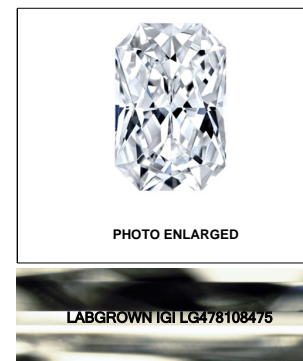


PHOTO ENLARGED

LABGROWN IGI LG478108475

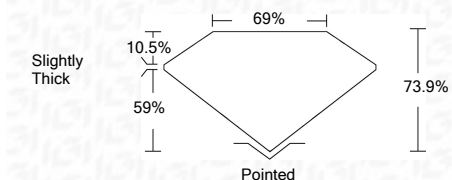
LASERSCRIBESM

06/11/2021
 IGI Report Number **LG478108475**
 Shape and Cutting Style **CUT CORNERED RECTANGULAR MODIFIED BRILLIANT**
 Measurements **8.92 x 6.63 x 4.90 mm**
GRADING RESULTS
 Carat Weight **2.37 CARATS**
 Color Grade **J**
 Clarity Grade **VS 2**

ADDITIONAL GRADING INFORMATION

Polish **EXCELLENT**
 Symmetry **EXCELLENT**
 Fluorescence **NONE**
 Inscription(s) **LABGROWN IGI LG478108475**

Comments: This Laboratory Grown Diamond was created by Chemical Vapor Deposition (CVD) growth process and may include post-growth treatment.
 Type IIa



The laboratory grown diamond described in this Report ("Report") has been graded, tested, analyzed, examined and/or inscribed by International Gemological Institute (I.G.I.). A laboratory grown diamond is one that has essentially the same chemical, physical and optical properties as a mined diamond, with the exception of being grown by man (a manufactured product). I.G.I. employs and utilizes those techniques and equipment currently available to I.G.I., including, without limitation, 10X magnification, corrected triplet loupe, binocular microscope, master color comparison stones, non-contact-optical measuring device, Diamond Sure™, Diamond View™, Spectrophotometer and such other instruments and/or processes as deemed appropriate by I.G.I. This Report includes advanced security features. A duly accredited gemologist or jeweler can advise you with respect to the importance of and interrelationship between cut, color, clarity and carat weight.
THIS REPORT IS NEITHER A GUARANTEE, VALUATION, NOR APPRAISAL OF THE GEMSTONE DESCRIBED HEREIN. PLEASE REVIEW THE LIMITATIONS AND RESTRICTIONS SET FORTH ONLINE. FOR ADDITIONAL INFORMATION, IMPORTANT LIMITATIONS AND DISCLAIMERS, PLEASE GO TO WWW.IGI.ORG OR CALL 1-888-BUY-IGIS.
 © INTERNATIONAL GEMOLOGICAL INSTITUTE, INC.



06/11/2021
 IGI Report No. **LG478108475**
CUT CORNERED RECT. MODIFIED BRILLIANT
 Measurements **8.92 x 6.63 x 4.90 mm**
 Carat Weight **2.37 CARATS**
 Color Grade **J**
 Clarity Grade **VS 2**
 Depth **73.9%**
 Table **69%**
 Grade **Slightly Thick**
 Cut **Pointed**
 Polish **EXCELLENT**
 Symmetry **EXCELLENT**
 Fluorescence **NONE**
 Inscription(s) **LABGROWN IGI LG478108475**
 Comments: **This Laboratory Grown Diamond was created by Chemical Vapor Deposition (CVD) growth process and may include post-growth treatment. Type IIa**