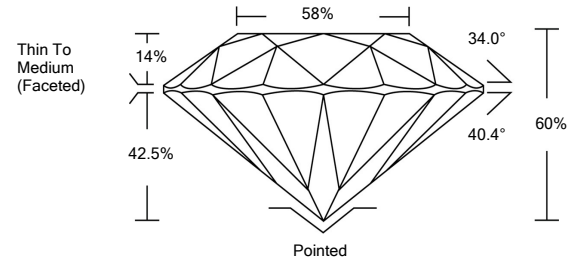




LG478113009

LABORATORY GROWN DIAMOND REPORT

PROPORTIONS



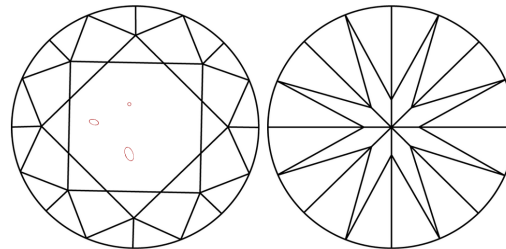
GRADING SCALES

Table with 5 columns for Color Grading Scale (CL to LT) and Clarity (10x) Grading Scale (FL to I).

The laboratory grown diamond described in this Report (Report) has been graded, tested, analyzed, examined and/or inscribed by International Gemological Institute (IGI). A laboratory grown diamond is one that has essentially the same chemical, physical and optical properties as a mined diamond...

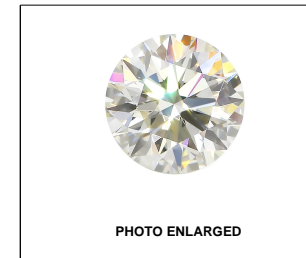
© INTERNATIONAL GEMOLOGICAL INSTITUTE, INC.

CLARITY CHARACTERISTICS



KEY TO SYMBOLS

Red symbols indicate internal characteristics. Green symbols indicate external characteristics.



LABGROWN IGI LG478113009

LASERSCRIBE<sup>SM</sup>

05/26/2021

IGI Report Number LG478113009

Shape and Cutting Style ROUND BRILLIANT

Measurements 7.12 - 7.15 x 4.28 mm

GRADING RESULTS

Carat Weight 1.32 CARAT

Color Grade D

Clarity Grade SI 1

Cut Grade IDEAL

ADDITIONAL GRADING INFORMATION

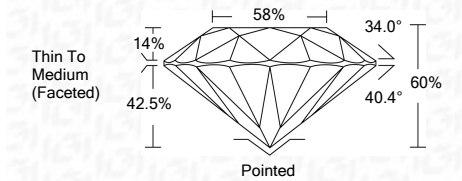
Polish EXCELLENT

Symmetry EXCELLENT

Fluorescence NONE

Inscription(s) LABGROWN IGI LG478113009

Comments: As Grown - No indication of post-growth treatment. This Laboratory Grown Diamond was created by High Pressure High Temperature (HPHT) growth process. Type II



IGI

Summary table of report details: 05/26/2021, IGI Report No. LG478113009, ROUND BRILLIANT, 7.12 - 7.15 x 4.28 mm, 1.32 CARAT, D, SI 1, IDEAL, 60%, 58%, EXCELLENT, EXCELLENT, NONE, LABGROWN IGI LG478113009.

