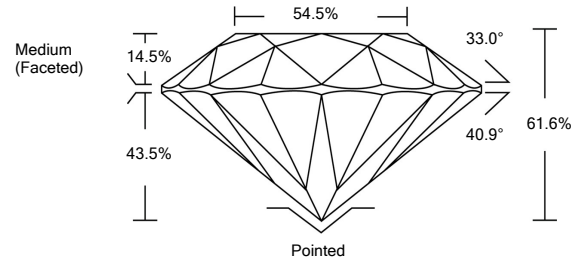




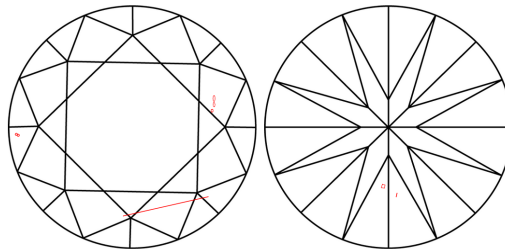
LG478113024

LABORATORY GROWN DIAMOND REPORT

PROPORTIONS



CLARITY CHARACTERISTICS



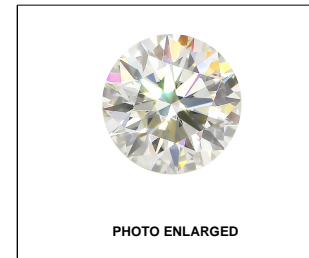
KEY TO SYMBOLS

Red symbols indicate internal characteristics. Green symbols indicate external characteristics.

GRADING SCALES

Table with 5 columns for Color Grading Scale (CL, NC, FT, VLT, LT) and Clarity (10x) Grading Scale (FL, IF, VVS, VS, SI, I). Includes sub-labels like 'COLORLESS D-F', 'NEAR COLORLESS G-J', etc.

The laboratory grown diamond described in this Report (Report) has been graded, tested, analyzed, examined and/or inscribed by International Gemological Institute (IGI). A laboratory grown diamond is one that has essentially the same chemical, physical and optical properties as a mined diamond...



LABGROWN IGI LG478113024

LASERSCRIBESM

05/25/2021

IGI Report Number LG478113024

Shape and Cutting Style ROUND BRILLIANT

Measurements 6.46 - 6.50 x 3.99 mm

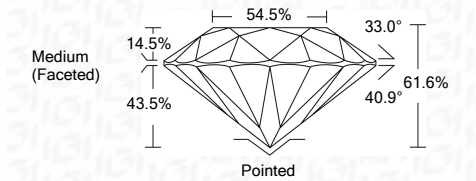
GRADING RESULTS

Carat Weight 1.01 CARAT

Color Grade E

Clarity Grade SI 2

Cut Grade IDEAL



ADDITIONAL GRADING INFORMATION

Polish EXCELLENT

Symmetry EXCELLENT

Fluorescence NONE

Inscription(s) LABGROWN IGI LG478113024

Comments: As Grown - No indication of post-growth treatment. This Laboratory Grown Diamond was created by High Pressure High Temperature (HPHT) growth process. Type II



IGI

Summary table of report details: 05/25/2021, IGI Report No. LG478113024, ROUND BRILLIANT, 6.46 - 6.50 x 3.99 mm, 1.01 CARAT, E, SI 2, IDEAL, 61.6%, 54.5%, Medium (Faceted), Pointed, EXCELLENT, EXCELLENT, NONE, LABGROWN IGI LG478113024.

