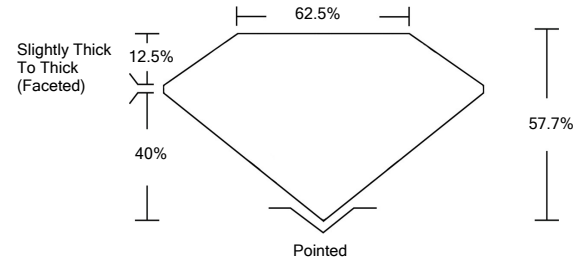




LG478113031

LABORATORY GROWN DIAMOND REPORT

PROPORTIONS



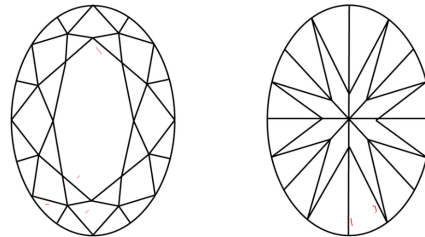
GRADING SCALES

Table with 5 columns for Color Grading Scale (CL, NC, FT, VLT, LT) and Clarity (10x) Grading Scale (FL, IF, VVS, VS, SI, I). Includes descriptions like 'COLORLESS D-F', 'NEAR COLORLESS G-J', etc.

The laboratory grown diamond described in this Report (Report) has been graded, tested, analyzed, examined and/or inscribed by International Gemological Institute (IGI). A laboratory grown diamond is one that has essentially the same chemical, physical and optical properties as a mined diamond...

© INTERNATIONAL GEMOLOGICAL INSTITUTE, INC.

CLARITY CHARACTERISTICS



KEY TO SYMBOLS

Red symbols indicate internal characteristics. Green symbols indicate external characteristics.

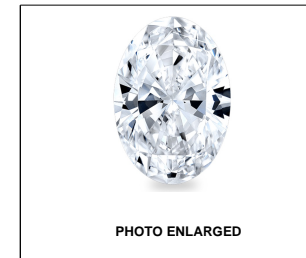


PHOTO ENLARGED



LASERSCRIBE SM

05/26/2021

IGI Report Number LG478113031

Shape and Cutting Style OVAL BRILLIANT

Measurements 7.91 x 5.88 x 3.39 mm

GRADING RESULTS

Carat Weight 1.01 CARAT

Color Grade D

Clarity Grade VS 1

ADDITIONAL GRADING INFORMATION

Polish EXCELLENT

Symmetry VERY GOOD

Fluorescence NONE

Inscription(s) LABGROWN IGI LG478113031

Comments: As Grown - No indication of post-growth treatment.

This Laboratory Grown Diamond was created by High Pressure High Temperature (HPHT) growth process. Type II



IGI

05/26/2021 IGI Report No. LG478113031 OVAL BRILLIANT 7.91 x 5.88 x 3.39 mm 1.01 CARAT D VS 1 57.7% 62.5% Slightly Thick To Thick (Faceted) Pointed EXCELLENT VERY GOOD NONE LABGROWN IGI LG478113031

As Grown - No indication of post-growth treatment. This Laboratory Grown Diamond was created by High Pressure High Temperature (HPHT) growth process. Type II

