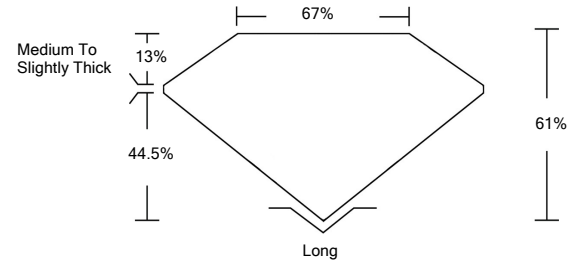




LG478125345

LABORATORY GROWN DIAMOND REPORT

PROPORTIONS



GRADING SCALES

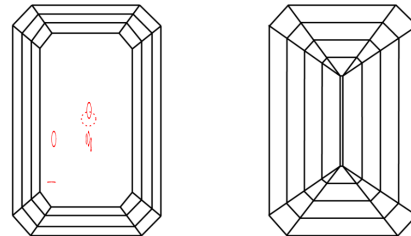
| COLOR GRADING SCALE | CL COLORLESS D-F | NC NEAR COLORLESS G-J | FT FAINT K-M | VL VERY LIGHT N-R | LT LIGHT S-Z |
|-----------------------------|------------------------------------|-----------------------------------|-------------------------------|-------------------------|-----------------|
| CLARITY (10x) GRADING SCALE | FL FLAWLESS INTERNALLY FLAWLESS | IF VERY VERY SLIGHTLY INCLUDED | VVS VERY SLIGHTLY INCLUDED | VS SLIGHTLY INCLUDED | SI INCLUDED |

The laboratory grown diamond described in this Report (Report) has been graded, tested, analyzed, examined and/or inscribed by International Gemological Institute (IGI). A laboratory grown diamond is one that has essentially the same chemical, physical and optical properties as a mined diamond, with the exception of being grown by man (a manufactured product). IGI employs and utilizes those techniques and equipment currently available to IGI, including, without limitation, 10X magnification, corrected triplet loupe, binocular microscope, master color comparison stones, non-contact-optical measuring device, Diamond Sure™, Diamond View™, Spectrophotometer and such other instruments and/or processes as deemed appropriate by IGI. This Report includes advanced security features. A duly accredited gemologist or jeweler can advise you with respect to the importance of and interrelationship between cut, color, clarity and carat weight.

THIS REPORT IS NEITHER A GUARANTEE, VALUATION, NOR APPRAISAL OF THE GEMSTONE DESCRIBED HEREIN. PLEASE REVIEW THE LIMITATIONS AND RESTRICTIONS SET FORTH ONLINE. FOR ADDITIONAL INFORMATION, IMPORTANT LIMITATIONS AND DISCLAIMERS, PLEASE GO TO WWW.IGI.ORG OR CALL 1-888-BUY-IGIS.

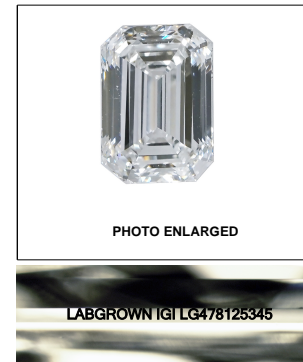
© INTERNATIONAL GEMOLOGICAL INSTITUTE, INC.

CLARITY CHARACTERISTICS



KEY TO SYMBOLS

Red symbols indicate internal characteristics.
Green symbols indicate external characteristics.



06/24/2021

IGI Report Number **LG478125345**

Shape and Cutting Style **EMERALD CUT**

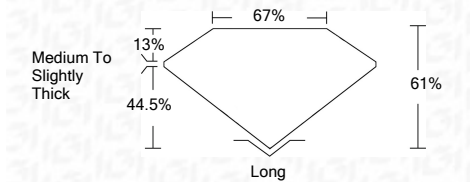
Measurements **7.18 x 5.33 x 3.25 mm**

GRADING RESULTS

Carat Weight **1.25 CARAT**

Color Grade **I**

Clarity Grade **SI 2**



ADDITIONAL GRADING INFORMATION

Polish **EXCELLENT**

Symmetry **VERY GOOD**

Fluorescence **NONE**

Inscription(s) **LABGROWN IGI LG478125345**

Comments: As Grown - No indication of post-growth treatment.

This Laboratory Grown Diamond was created by High Pressure High Temperature (HPHT) growth process. Type II



IGI

06/24/2021
IGI Report No. LG478125345
EMERALD CUT
Carat Weight **1.25 CARAT**
Color Grade **I**
Clarity Grade **SI 2**
Depth **61%**
Table **67%**
Grade **Medium To Slightly Thick**
Cut **Long**
Polish **EXCELLENT**
Symmetry **VERY GOOD**
Fluorescence **NONE**
Inscription(s) **LABGROWN IGI LG478125345**
Comments:
As Grown - No indication of post-growth treatment.
This Laboratory Grown Diamond was created by High Pressure High Temperature (HPHT) growth process. Type II

