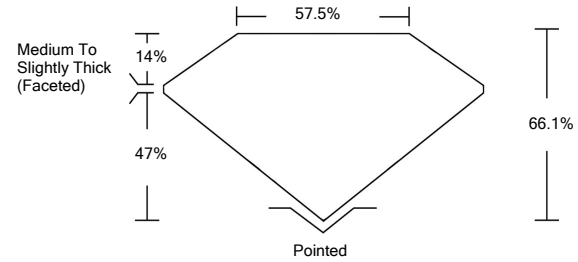




LG483126316

LABORATORY GROWN DIAMOND REPORT

PROPORTIONS



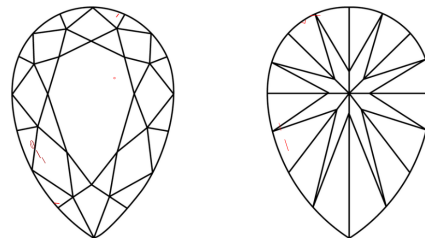
GRADING SCALES

Table with 5 columns for Color Grading Scale (CL to LT) and Clarity (10x) Grading Scale (FL to I). Includes sub-labels like 'COLORLESS D-F', 'NEAR COLORLESS G-J', etc.

The laboratory grown diamond described in this Report (Report) has been graded, tested, analyzed, examined and/or inscribed by International Gemological Institute (IGI). A laboratory grown diamond is one that has essentially the same chemical, physical and optical properties as a mined diamond...

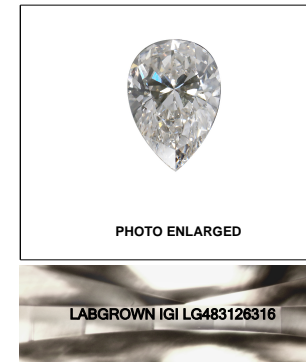
© INTERNATIONAL GEMOLOGICAL INSTITUTE, INC.

CLARITY CHARACTERISTICS



KEY TO SYMBOLS

Red symbols indicate internal characteristics. Green symbols indicate external characteristics.



LASERSCRIBE SM

07/03/2021

IGI Report Number LG483126316

Shape and Cutting Style PEAR BRILLIANT

Measurements 8.86 x 5.52 x 3.65 mm

GRADING RESULTS

Carat Weight 1.05 CARAT

Color Grade I

Clarity Grade SI 1

ADDITIONAL GRADING INFORMATION

Polish EXCELLENT

Symmetry VERY GOOD

Fluorescence NONE

Inscription(s) LABGROWN IGI LG483126316

Comments: This Laboratory Grown Diamond was created by Chemical Vapor Deposition (CVD) growth process and may include post-growth treatment. Type IIa



IGI

Summary table of report details: IGI Report No. LG483126316, PEAR BRILLIANT, 8.86 x 5.52 x 3.65 mm, 1.05 CARAT, SI 1, 66.1% Depth, 57.5% Table, Medium To Slightly Thick (Faceted) Grade, Pointed Cut, EXCELLENT Polish, VERY GOOD Symmetry, NONE Fluorescence, LABGROWN IGI LG483126316 Inscription(s).

This Laboratory Grown Diamond was created by Chemical Vapor Deposition (CVD) growth process and may include post-growth treatment. Type IIa

