



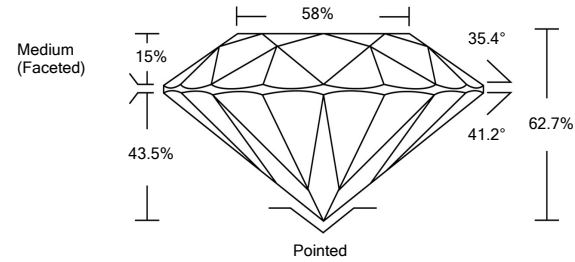
LABORATORY GROWN DIAMOND REPORT

LG483126357

GRADING SCALES

Table with 5 columns for Color Grading Scale (CL, NC, FT, VLT, LT) and Clarity (10x) Grading Scale (FL, IF, VVS, VS, SI, I). Includes sub-labels like 'COLORLESS D-F', 'NEAR COLORLESS G-J', etc.

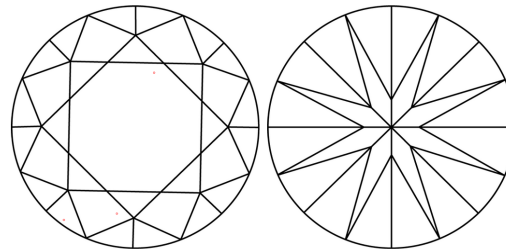
PROPORTIONS



The laboratory grown diamond described in this Report (Report) has been graded, tested, analyzed, examined and/or inscribed by International Gemological Institute (IGI). A laboratory grown diamond is one that has essentially the same chemical, physical and optical properties as a mined diamond...

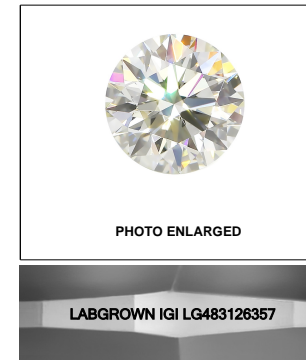
© INTERNATIONAL GEMOLOGICAL INSTITUTE, INC.

CLARITY CHARACTERISTICS



KEY TO SYMBOLS

Red symbols indicate internal characteristics. Green symbols indicate external characteristics.



LASERSCRIBESM

07/03/2021

IGI Report Number LG483126357

Shape and Cutting Style ROUND BRILLIANT

Measurements 6.65 - 6.69 x 4.18 mm

GRADING RESULTS

Carat Weight 1.14 CARAT

Color Grade I

Clarity Grade VVS 2

Cut Grade EXCELLENT

ADDITIONAL GRADING INFORMATION

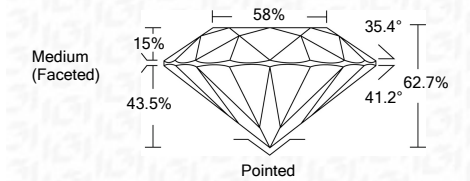
Polish EXCELLENT

Symmetry EXCELLENT

Fluorescence NONE

Inscription(s) LABGROWN IGI LG483126357

Comments: This Laboratory Grown Diamond was created by Chemical Vapor Deposition (CVD) growth process and may include post-growth treatment. Type IIa



07/03/2021

IGI Report Number LG483126357

Shape and Cutting Style ROUND BRILLIANT

Measurements 6.65 - 6.69 x 4.18 mm

GRADING RESULTS

Carat Weight 1.14 CARAT

Color Grade I

Clarity Grade VVS 2

Cut Grade EXCELLENT

ADDITIONAL GRADING INFORMATION

Polish EXCELLENT

Symmetry EXCELLENT

Fluorescence NONE

Inscription(s) LABGROWN IGI LG483126357

Comments: This Laboratory Grown Diamond was created by Chemical Vapor Deposition (CVD) growth process and may include post-growth treatment. Type IIa



IGI

07/03/2021 IGI Report No. LG483126357 ROUND BRILLIANT 6.65 - 6.69 x 4.18 mm 1.14 CARAT I VVS 2 EXCELLENT 62.7% 58% Medium (Faceted) Pointed EXCELLENT EXCELLENT NONE LABGROWN IGI LG483126357