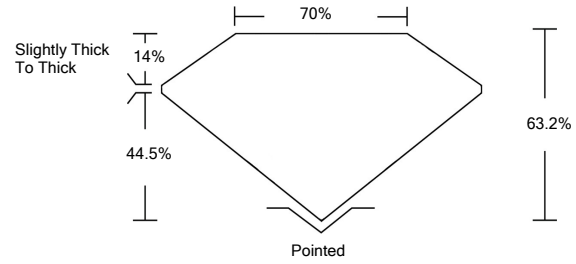




LG483195544

LABORATORY GROWN DIAMOND REPORT

PROPORTIONS

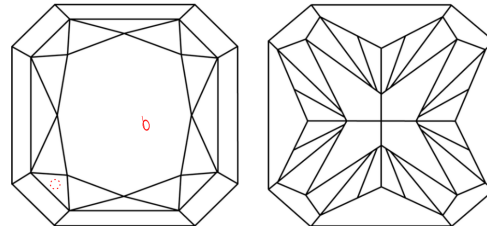


GRADING SCALES

Table with 5 columns for Color (CL, NC, FT, VLT, LT) and Clarity (FL, IF, VVS, VS, SI, I) grading scales.

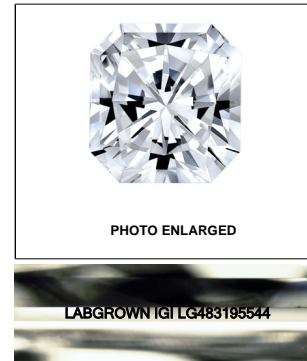
The laboratory grown diamond described in this Report (Report) has been graded, tested, analyzed, examined and/or inscribed by International Gemological Institute (IGI). A laboratory grown diamond is one that has essentially the same chemical, physical and optical properties as a mined diamond...

CLARITY CHARACTERISTICS



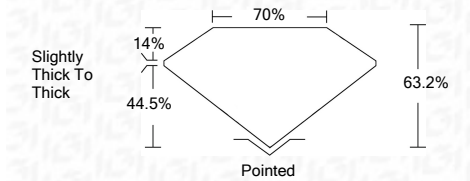
KEY TO SYMBOLS

Red symbols indicate internal characteristics. Green symbols indicate external characteristics.



LASERSCRIBESM

06/30/2021 IGI Report Number LG483195544 Shape and Cutting Style CUT CORNERED SQUARE MODIFIED BRILLIANT Measurements 5.71 x 5.44 x 3.44 mm GRADING RESULTS Carat Weight 1.01 CARAT Color Grade D Clarity Grade SI 1



ADDITIONAL GRADING INFORMATION Polish EXCELLENT Symmetry EXCELLENT Fluorescence NONE Inscription(s) LABGROWN IGI LG483195544

Comments: As Grown - No indication of post-growth treatment. This Laboratory Grown Diamond was created by High Pressure High Temperature (HPHT) growth process. Type II



IGI

06/30/2021 IGI Report No. LG483195544 CUT CORNERED SQUARE MODIFIED BRILLIANT 5.71 x 5.44 x 3.44 mm Carat Weight 1.01 CARAT Color Grade D Clarity Grade SI 1 Depth 63.2% Table 70% Grade Slightly Thick To Thick Culet Pointed Polish EXCELLENT Symmetry EXCELLENT Fluorescence NONE Inscription(s) LABGROWN IGI LG483195544 Comments: As Grown - No indication of post-growth treatment. This Laboratory Grown Diamond was created by High Pressure High Temperature (HPHT) growth process. Type II

