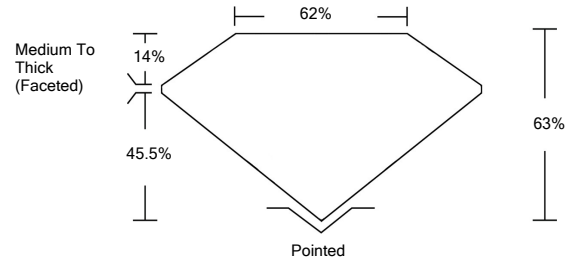




LG483197644

LABORATORY GROWN DIAMOND REPORT

PROPORTIONS

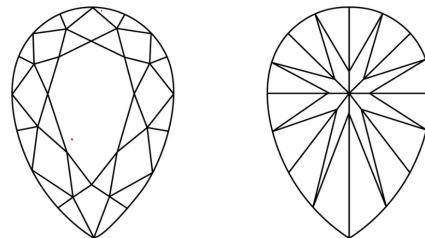


GRADING SCALES

Table with 2 main sections: COLOR GRADING SCALE (CL, NC, FT, VLT, LT) and CLARITY (10x) GRADING SCALE (FL, IF, VVS, VS, SI, I).

The laboratory grown diamond described in this Report (Report) has been graded, tested, analyzed, examined and/or inscribed by International Gemological Institute (IGI). A laboratory grown diamond is one that has essentially the same chemical, physical and optical properties as a mined diamond...

CLARITY CHARACTERISTICS



KEY TO SYMBOLS

Red symbols indicate internal characteristics. Green symbols indicate external characteristics.

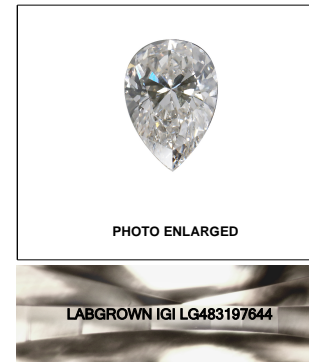


PHOTO ENLARGED LASERSCRIBE SM

07/03/2021

IGI Report Number LG483197644

Shape and Cutting Style PEAR BRILLIANT

Measurements 8.87 x 5.52 x 3.48 mm

GRADING RESULTS

Carat Weight 1.01 CARAT

Color Grade J

Clarity Grade VS 1

ADDITIONAL GRADING INFORMATION

Polish EXCELLENT

Symmetry EXCELLENT

Fluorescence NONE

Inscription(s) LABGROWN IGI LG483197644

Comments: This Laboratory Grown Diamond was created by Chemical Vapor Deposition (CVD) growth process and may include post-growth treatment. Type IIa



07/03/2021 IGI Report No. LG483197644 PEAR BRILLIANT 8.87 x 5.52 x 3.48 mm 1.01 CARAT J VS 1 63% 62% Medium To Thick (Faceted) Pointed EXCELLENT EXCELLENT NONE LABGROWN IGI LG483197644

This Laboratory Grown Diamond was created by Chemical Vapor Deposition (CVD) growth process and may include post-growth treatment. Type IIa

