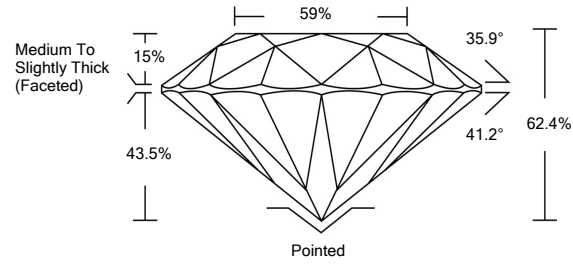




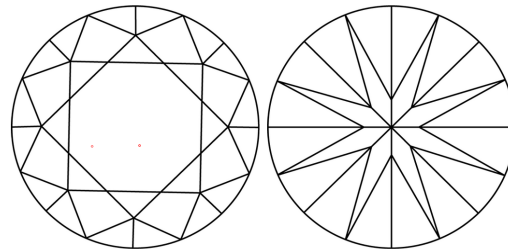
LG485160531

**LABORATORY GROWN DIAMOND REPORT**

**PROPORTIONS**



**CLARITY CHARACTERISTICS**



**KEY TO SYMBOLS**

Red symbols indicate internal characteristics.  
Green symbols indicate external characteristics.

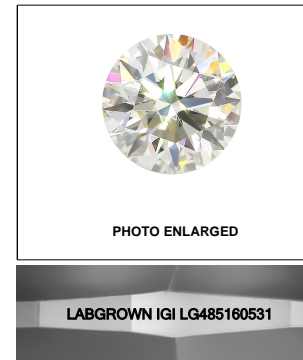
**GRADING SCALES**

COLOR GRADING SCALE	CL	NC	FT	VL	LT	
COLORLESS D-F		NEAR COLORLESS G-J	FAINT K-M	VERY LIGHT N-R	LIGHT S-Z	
CLARITY (10x) GRADING SCALE	FL	IF	VVS	VS	SI	I
FLAWLESS INTERNALLY FLAWLESS		VERY VERY SLIGHTLY INCLUDED	VERY SLIGHTLY INCLUDED	SLIGHTLY INCLUDED	INCLUDED	

The laboratory grown diamond described in this Report (Report) has been graded, tested, analyzed, examined and/or inscribed by International Gemological Institute (IGI). A laboratory grown diamond is one that has essentially the same chemical, physical and optical properties as a mined diamond, with the exception of being grown by man (a manufactured product). IGI employs and utilizes those techniques and equipment currently available to IGI, including, without limitation, 10X magnification, corrected triplet loupe, binocular microscope, master color comparison stones, non-contact-optical measuring device, Diamond Sure™, Diamond View™, Spectrophotometer and such other instruments and/or processes as deemed appropriate by IGI. This Report includes advanced security features. A duly accredited gemologist or jeweler can advise you with respect to the importance of and interrelationship between cut, color, clarity and carat weight.

**THIS REPORT IS NEITHER A GUARANTEE, VALUATION, NOR APPRAISAL OF THE GEMSTONE DESCRIBED HEREIN. PLEASE REVIEW THE LIMITATIONS AND RESTRICTIONS SET FORTH ONLINE. FOR ADDITIONAL INFORMATION, IMPORTANT LIMITATIONS AND DISCLAIMERS, PLEASE GO TO WWW.IGI.ORG OR CALL 1-888-BUY-IGIS.**

© INTERNATIONAL GEMOLOGICAL INSTITUTE, INC.



**LASERSCRIBE<sup>SM</sup>**

07/12/2021

IGI Report Number **LG485160531**

Shape and Cutting Style **ROUND BRILLIANT**

Measurements **7.33 - 7.37 x 4.59 mm**

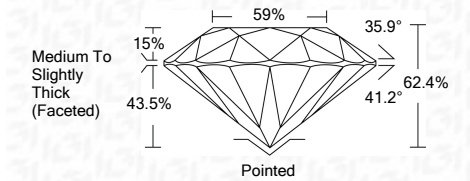
**GRADING RESULTS**

Carat Weight **1.54 CARAT**

Color Grade **I**

Clarity Grade **VS 1**

Cut Grade **IDEAL**



**ADDITIONAL GRADING INFORMATION**

Polish **EXCELLENT**

Symmetry **EXCELLENT**

Fluorescence **NONE**

Inscription(s) **LABGROWN IGI LG485160531**

Comments: This Laboratory Grown Diamond was created by Chemical Vapor Deposition (CVD) growth process and may include post-growth treatment.  
Type IIa



**IGI**

IGI Report No. LG485160531	1.54 CARAT	I	VS 1	IDEAL	59%	Pointed	EXCELLENT	EXCELLENT	NONE	LABGROWN IGI LG485160531
ROUND BRILLIANT	7.33 - 7.37 x 4.59 mm	Medium To Slightly Thick (Faceted)	62.4%	43.5%	41.2°	35.9°	59%	Pointed	EXCELLENT	EXCELLENT
Carat Weight	1.54 CARAT									
Color Grade	I									
Clarity Grade	VS 1									
Cut Grade	IDEAL									
Depth	62.4%									
Table	43.5%									
Grade	41.2°									
Culet	Pointed									
Polish	EXCELLENT									
Symmetry	EXCELLENT									
Fluorescence	NONE									
Inscription(s)	LABGROWN IGI LG485160531									

07/12/2021

IGI Report No. LG485160531

ROUND BRILLIANT

7.33 - 7.37 x 4.59 mm

Carat Weight

1.54 CARAT

Color Grade

I

Clarity Grade

VS 1

Cut Grade

IDEAL

Depth

62.4%

Table

43.5%

Grade

41.2°

Culet

Pointed

Polish

EXCELLENT

Symmetry

EXCELLENT

Fluorescence

NONE

Inscription(s)

LABGROWN IGI LG485160531

Comments:

This Laboratory Grown Diamond was created by Chemical Vapor Deposition (CVD) growth process and may include post-growth treatment.

Type IIa

