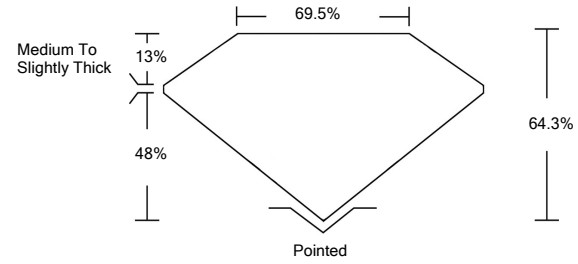




LG485160808

LABORATORY GROWN DIAMOND REPORT

PROPORTIONS



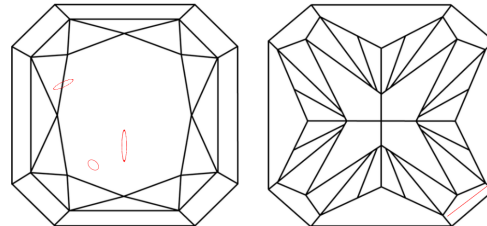
GRADING SCALES

Table with 5 columns for Color Grading Scale (CL, NC, FT, VLT, LT) and Clarity (10x) Grading Scale (FL, IF, VVS, VS, SI, I).

The laboratory grown diamond described in this Report (Report) has been graded, tested, analyzed, examined and/or inscribed by International Gemological Institute (IGI). A laboratory grown diamond is one that has essentially the same chemical, physical and optical properties as a mined diamond...

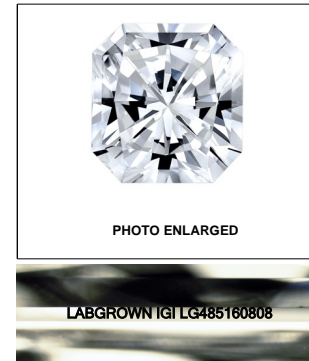
© INTERNATIONAL GEMOLOGICAL INSTITUTE, INC.

CLARITY CHARACTERISTICS



KEY TO SYMBOLS

Red symbols indicate internal characteristics. Green symbols indicate external characteristics.



LASERSCRIBE SM

07/16/2021

IGI Report Number LG485160808

Shape and Cutting Style CUT CORNERED SQUARE MODIFIED BRILLIANT

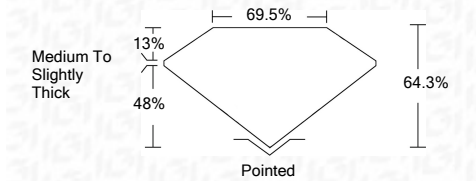
Measurements 6.46 x 6.45 x 4.15 mm

GRADING RESULTS

Carat Weight 1.52 CARAT

Color Grade E

Clarity Grade I 1



ADDITIONAL GRADING INFORMATION

Polish EXCELLENT

Symmetry EXCELLENT

Fluorescence NONE

Inscription(s) LABGROWN IGI LG485160808

Comments: As Grown - No indication of post-growth treatment.

This Laboratory Grown Diamond was created by High Pressure High Temperature (HPHT) growth process. Type II



IGI

07/16/2021 IGI Report No. LG485160808 CUT CORNERED SQUARE MODIFIED BRILLIANT 6.46 x 6.45 x 4.15 mm 1.52 CARAT E I 1 64.3% 69.5% Medium To Slightly Thick Pointed EXCELLENT EXCELLENT NONE LABGROWN IGI LG485160808

As Grown - No indication of post-growth treatment. This Laboratory Grown Diamond was created by High Pressure High Temperature (HPHT) growth process. Type II

