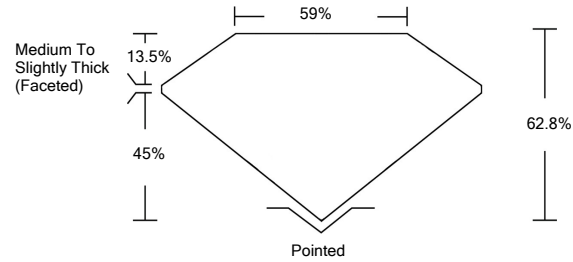




LG485162259

LABORATORY GROWN DIAMOND REPORT

PROPORTIONS

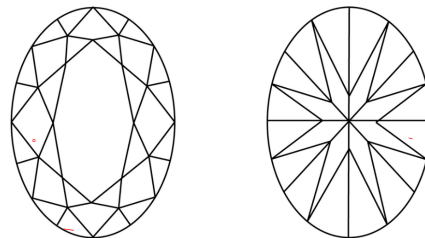


GRADING SCALES

Table with 5 columns: COLOR GRADING SCALE (CL, NC, FT, VLT, LT), CLARITY (10x) GRADING SCALE (FL, IF, VVS, VS, SI, I)

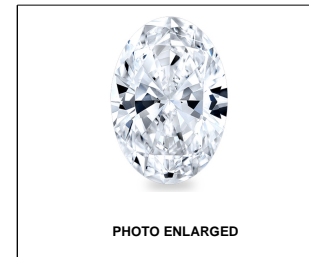
The laboratory grown diamond described in this Report (Report) has been graded, tested, analyzed, examined and/or inscribed by International Gemological Institute (IGI). A laboratory grown diamond is one that has essentially the same chemical, physical and optical properties as a mined diamond...

CLARITY CHARACTERISTICS



KEY TO SYMBOLS

Red symbols indicate internal characteristics. Green symbols indicate external characteristics.



LASERSCRIBE SM

07/17/2021

IGI Report Number LG485162259

Shape and Cutting Style OVAL BRILLIANT

Measurements 8.59 x 6.11 x 3.84 mm

GRADING RESULTS

Carat Weight 1.25 CARAT

Color Grade H

Clarity Grade VS 1

ADDITIONAL GRADING INFORMATION

Polish EXCELLENT

Symmetry EXCELLENT

Fluorescence NONE

Inscription(s) LABGROWN IGI LG485162259

Comments: This Laboratory Grown Diamond was created by Chemical Vapor Deposition (CVD) growth process and may include post-growth treatment. Type IIa



IGI

Summary table of diamond details: IGI Report No. LG485162259, OVAL BRILLIANT, 8.59 x 6.11 x 3.84 mm, 1.25 CARAT, VS 1, 62.8%, 59%, Medium To Slightly Thick (Faceted), Pointed, EXCELLENT, EXCELLENT, NONE, LABGROWN IGI LG485162259

This Laboratory Grown Diamond was created by Chemical Vapor Deposition (CVD) growth process and may include post-growth treatment. Type IIa

