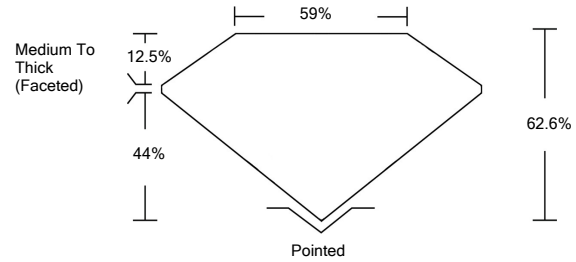




LG487109998

LABORATORY GROWN DIAMOND REPORT

PROPORTIONS



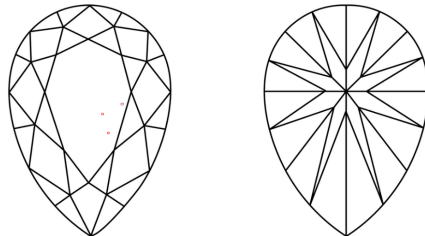
GRADING SCALES

Table with 2 rows and 5 columns showing color and clarity grading scales from CL to LT and FL to I.

The laboratory grown diamond described in this Report (Report) has been graded, tested, analyzed, examined and/or inscribed by International Gemological Institute (IGI). A laboratory grown diamond is one that has essentially the same chemical, physical and optical properties as a mined diamond...

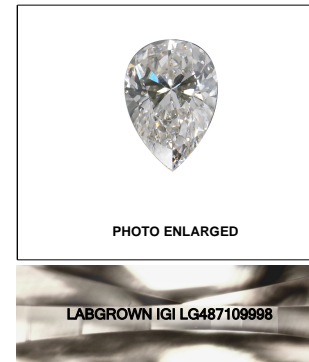
© INTERNATIONAL GEMOLOGICAL INSTITUTE, INC.

CLARITY CHARACTERISTICS



KEY TO SYMBOLS

Red symbols indicate internal characteristics. Green symbols indicate external characteristics.



LASERSCRIBE SM

08/06/2021

IGI Report Number LG487109998

Shape and Cutting Style PEAR BRILLIANT

Measurements 8.97 x 5.53 x 3.46 mm

GRADING RESULTS

Carat Weight 1.00 CARAT

Color Grade I

Clarity Grade VVS 2

ADDITIONAL GRADING INFORMATION

Polish EXCELLENT

Symmetry EXCELLENT

Fluorescence NONE

Inscription(s) LABGROWN IGI LG487109998

Comments: This Laboratory Grown Diamond was created by Chemical Vapor Deposition (CVD) growth process and may include post-growth treatment. Type IIa



IGI

Summary table of diamond details: 08/06/2021, IGI Report No. LG487109998, PEAR BRILLIANT, 8.97 x 5.53 x 3.46 mm, 1.00 CARAT, VVS 2, 62.6% depth, 59% table, Medium To Thick (Faceted) grade, Pointed cut, EXCELLENT polish and symmetry, NONE fluorescence, LABGROWN IGI LG487109998 inscription.

This Laboratory Grown Diamond was created by Chemical Vapor Deposition (CVD) growth process and may include post-growth treatment. Type IIa

