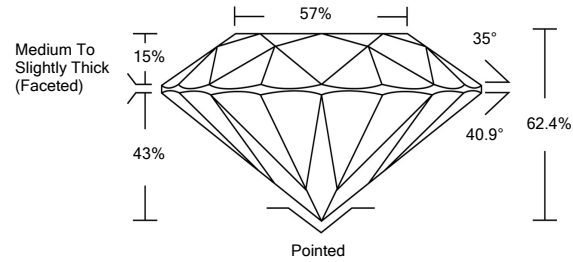




LABORATORY GROWN DIAMOND REPORT

LG487173394

PROPORTIONS



GRADING SCALES

Table with 5 columns for Color Grading Scale (CL, NC, FT, VLT, LT) and Clarity (10x) Grading Scale (FL, IF, VVS, VS, SI, I).

The laboratory grown diamond described in this Report (Report) has been graded, tested, analyzed, examined and/or inscribed by International Gemological Institute (IGI). A laboratory grown diamond is one that has essentially the same chemical, physical and optical properties as a mined diamond...

© INTERNATIONAL GEMOLOGICAL INSTITUTE, INC.

07/24/2021

IGI Report Number LG487173394

Shape and Cutting Style ROUND BRILLIANT

Measurements 6.35 - 6.38 x 3.97 mm

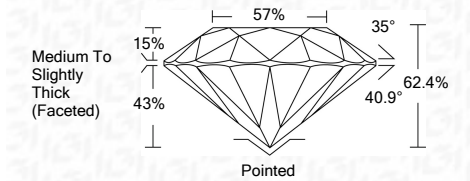
GRADING RESULTS

Carat Weight 1.00 CARAT

Color Grade H

Clarity Grade VS 1

Cut Grade IDEAL



ADDITIONAL GRADING INFORMATION

Polish EXCELLENT

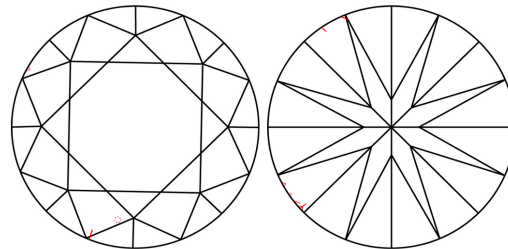
Symmetry EXCELLENT

Fluorescence NONE

Inscription(s) LABGROWN IGI LG487173394

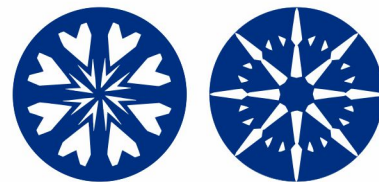
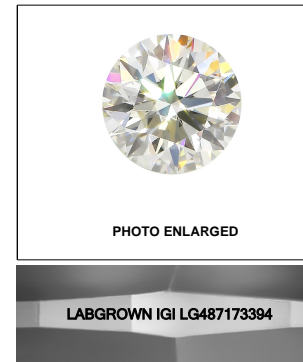
Comments: HEARTS & ARROWS This Laboratory Grown Diamond was created by Chemical Vapor Deposition (CVD) growth process and may include post-growth treatment. Type IIa

CLARITY CHARACTERISTICS



KEY TO SYMBOLS

Red symbols indicate internal characteristics. Green symbols indicate external characteristics.



07/24/2021 IGI Report Number LG487173394

Shape and Cutting Style ROUND BRILLIANT

Measurements 6.35 - 6.38 x 3.97 mm

GRADING RESULTS

Carat Weight 1.00 CARAT

Color Grade H

Clarity Grade VS 1

Cut Grade IDEAL

ADDITIONAL GRADING INFORMATION

Polish EXCELLENT

Symmetry EXCELLENT

Fluorescence NONE

Inscription(s) LABGROWN IGI LG487173394

Comments: HEARTS & ARROWS This Laboratory Grown Diamond was created by Chemical Vapor Deposition (CVD) growth process and may include post-growth treatment. Type IIa

Summary table of report details: IGI Report No. LG487173394, ROUND BRILLIANT, 6.35 - 6.38 x 3.97 mm, 1.00 CARAT, VS 1, IDEAL, 62.4%, 57%, Medium To Slightly Thick (Faceted), Pointed, EXCELLENT, EXCELLENT, NONE, LABGROWN IGI LG487173394.