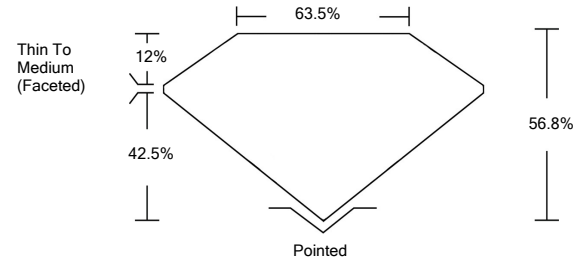




LG488142221

LABORATORY GROWN DIAMOND REPORT

PROPORTIONS

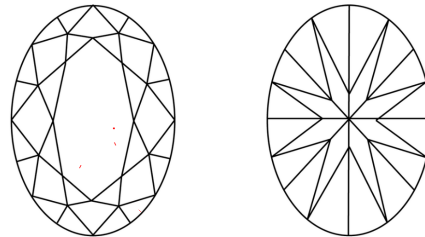


GRADING SCALES

Table with 5 columns for Color Grading Scale (CL, NC, FT, VLT, LT) and Clarity (10x) Grading Scale (FL, IF, VVS, VS, SI, I). Includes sub-labels like COLORLESS D-F, NEAR COLORLESS G-J, etc.

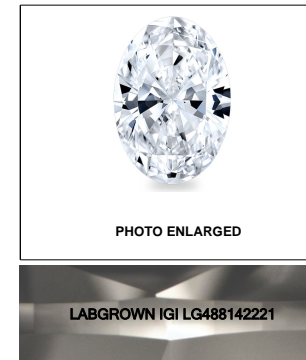
The laboratory grown diamond described in this Report (Report) has been graded, tested, analyzed, examined and/or inscribed by International Gemological Institute (IGI). A laboratory grown diamond is one that has essentially the same chemical, physical and optical properties as a mined diamond...

CLARITY CHARACTERISTICS



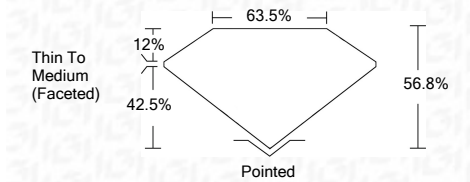
KEY TO SYMBOLS

Red symbols indicate internal characteristics. Green symbols indicate external characteristics.



LASERSCRIBE SM

08/09/2021 IGI Report Number LG488142221 Shape and Cutting Style OVAL BRILLIANT Measurements 9.24 x 6.34 x 3.60 mm GRADING RESULTS Carat Weight 1.29 CARAT Color Grade F Clarity Grade VVS 2



ADDITIONAL GRADING INFORMATION Polish EXCELLENT Symmetry EXCELLENT Fluorescence NONE Inscription(s) LABGROWN IGI LG488142221

Comments: This Laboratory Grown Diamond was created by Chemical Vapor Deposition (CVD) growth process and may include post-growth treatment. Type IIa



08/09/2021 IGI Report No. LG488142221 OVAL BRILLIANT 9.24 x 6.34 x 3.60 mm 1.29 CARAT F VVS 2 56.8% 63.5% Thin To Medium (Faceted) EXCELLENT EXCELLENT NONE LABGROWN IGI LG488142221

This Laboratory Grown Diamond was created by Chemical Vapor Deposition (CVD) growth process and may include post-growth treatment. Type IIa

