



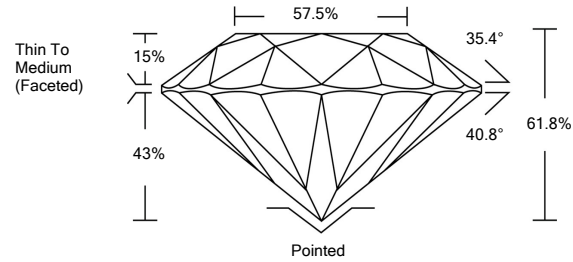
LABORATORY GROWN DIAMOND REPORT

LG490178219

GRADING SCALES

Table with 5 columns: COLOR GRADING SCALE (CL, NC, FT, VLT, LT), CLARITY (10x) GRADING SCALE (FL, IF, VVS, VS, SI, I). Includes sub-labels like COLORLESS D-F, NEAR COLORLESS G-J, etc.

PROPORTIONS



The laboratory grown diamond described in this Report (Report) has been graded, tested, analyzed, examined and/or inscribed by International Gemological Institute (IGI). A laboratory grown diamond is one that has essentially the same chemical, physical and optical properties as a mined diamond...

08/27/2021

IGI Report Number LG490178219

Shape and Cutting Style ROUND BRILLIANT

Measurements 6.83 - 6.88 x 4.24 mm

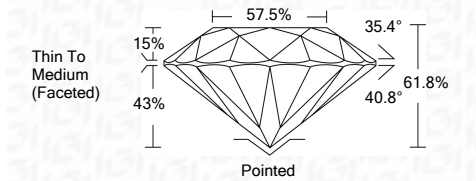
GRADING RESULTS

Carat Weight 1.22 CARAT

Color Grade D

Clarity Grade VVS 1

Cut Grade IDEAL



ADDITIONAL GRADING INFORMATION

Polish EXCELLENT

Symmetry EXCELLENT

Fluorescence NONE

Inscription(s) LABGROWN IGI LG490178219

Comments: As Grown - No indication of post-growth treatment. This Laboratory Grown Diamond was created by High Pressure High Temperature (HPHT) growth process. Type II

08/27/2021

IGI Report Number LG490178219

Shape and Cutting Style ROUND BRILLIANT

Measurements 6.83 - 6.88 x 4.24 mm

GRADING RESULTS

Carat Weight 1.22 CARAT

Color Grade D

Clarity Grade VVS 1

Cut Grade IDEAL

ADDITIONAL GRADING INFORMATION

Polish EXCELLENT

Symmetry EXCELLENT

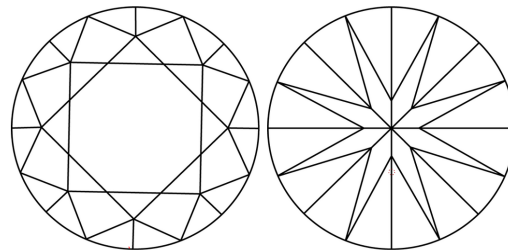
Fluorescence NONE

Inscription(s) LABGROWN IGI LG490178219

Comments: As Grown - No indication of post-growth treatment.

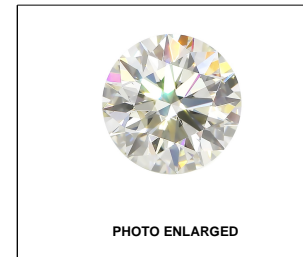
This Laboratory Grown Diamond was created by High Pressure High Temperature (HPHT) growth process. Type II

CLARITY CHARACTERISTICS



KEY TO SYMBOLS

Red symbols indicate internal characteristics. Green symbols indicate external characteristics.



LABGROWN IGI LG490178219

LASERSCRIBE SM



IGI

08/27/2021 IGI Report No. LG490178219 ROUND BRILLIANT 6.83 - 6.88 x 4.24 mm 1.22 CARAT D VVS 1 IDEAL 61.8% 57.5% EXCELLENT EXCELLENT NONE LABGROWN IGI LG490178219