



LABORATORY GROWN DIAMOND REPORT

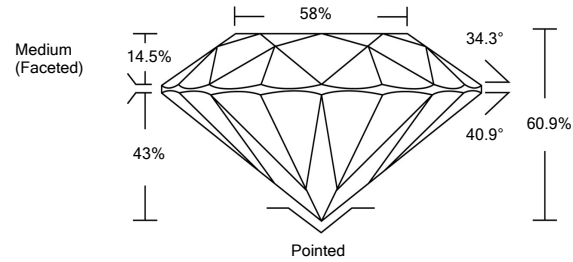
LG490192763

GRADING SCALES

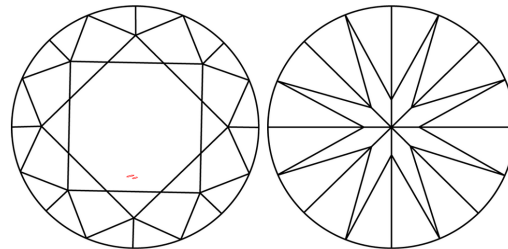
Table with 5 columns for Color Grading Scale (CL, NC, FT, VLT, LT) and Clarity (10x) Grading Scale (FL, IF, VVS, VS, SI, I). Includes sub-grades like D-F, G-J, K-M, N-R, S-Z.

The laboratory grown diamond described in this Report (Report) has been graded, tested, analyzed, examined and/or inscribed by International Gemological Institute (IGI). A laboratory grown diamond is one that has essentially the same chemical, physical and optical properties as a mined diamond...

PROPORTIONS

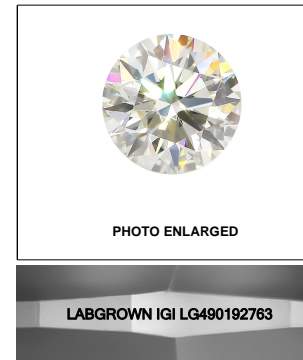


CLARITY CHARACTERISTICS



KEY TO SYMBOLS

Red symbols indicate internal characteristics. Green symbols indicate external characteristics.



08/25/2021

IGI Report Number LG490192763

Shape and Cutting Style ROUND BRILLIANT

Measurements 6.68 - 6.71 x 4.07 mm

GRADING RESULTS

Carat Weight 1.11 CARAT

Color Grade E

Clarity Grade VS 1

Cut Grade IDEAL

ADDITIONAL GRADING INFORMATION

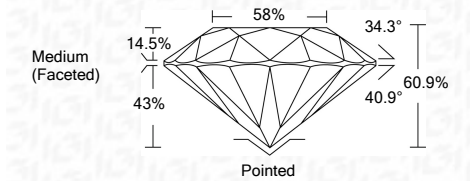
Polish EXCELLENT

Symmetry EXCELLENT

Fluorescence NONE

Inscription(s) LABGROWN IGI LG490192763

Comments: As Grown - No indication of post-growth treatment. This Laboratory Grown Diamond was created by High Pressure High Temperature (HPHT) growth process. Type II



08/25/2021

IGI Report Number LG490192763

Shape and Cutting Style ROUND BRILLIANT

Measurements 6.68 - 6.71 x 4.07 mm

GRADING RESULTS

Carat Weight 1.11 CARAT

Color Grade E

Clarity Grade VS 1

Cut Grade IDEAL

ADDITIONAL GRADING INFORMATION

Polish EXCELLENT

Symmetry EXCELLENT

Fluorescence NONE

Inscription(s) LABGROWN IGI LG490192763

Comments: As Grown - No indication of post-growth treatment.

This Laboratory Grown Diamond was created by High Pressure High Temperature (HPHT) growth process. Type II



IGI

Summary table of report details: IGI Report No. LG490192763, ROUND BRILLIANT, 6.68 - 6.71 x 4.07 mm, 1.11 CARAT, VS 1, IDEAL, 60.9%, 58%, Medium (Faceted), Polished EXCELLENT, Symmetry EXCELLENT, Fluorescence NONE, LABGROWN IGI LG490192763.