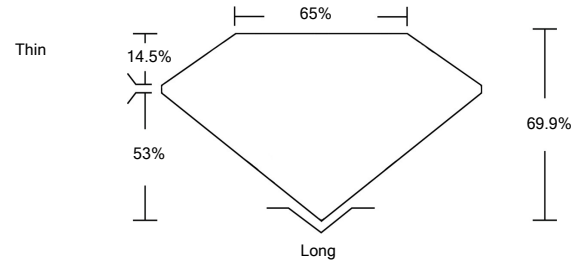




LG492110478

LABORATORY GROWN DIAMOND REPORT

PROPORTIONS

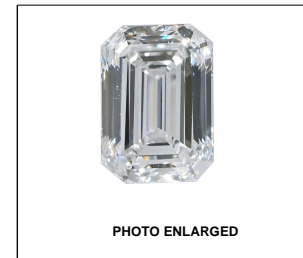


GRADING SCALES

Table with 5 columns for Color Grading Scale (CL, NC, FT, VLT, LT) and Clarity (10x) Grading Scale (FL, IF, VVS, VS, SI, I) with corresponding descriptions.

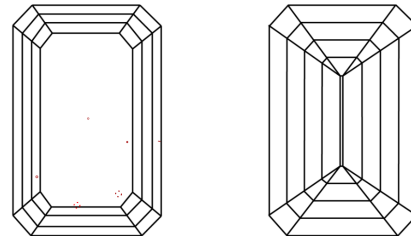
The laboratory grown diamond described in this Report (Report) has been graded, tested, analyzed, examined and/or inscribed by International Gemological Institute (IGI). A laboratory grown diamond is one that has essentially the same chemical, physical and optical properties as a mined diamond...

© INTERNATIONAL GEMOLOGICAL INSTITUTE, INC.



LASERSCRIBESM

CLARITY CHARACTERISTICS



KEY TO SYMBOLS

Red symbols indicate internal characteristics. Green symbols indicate external characteristics.

08/28/2021 IGI Report Number LG492110478

Shape and Cutting Style EMERALD CUT

Measurements 7.61 x 4.79 x 3.35 mm

GRADING RESULTS

Carat Weight 1.22 CARAT

Color Grade F

Clarity Grade VS 1

ADDITIONAL GRADING INFORMATION

Polish EXCELLENT

Symmetry EXCELLENT

Fluorescence NONE

Inscription(s) LABGROWN IGI LG492110478

Comments: This Laboratory Grown Diamond was created by Chemical Vapor Deposition (CVD) growth process and may include post-growth treatment. Type IIa

08/28/2021 IGI Report Number LG492110478

Shape and Cutting Style EMERALD CUT

Measurements 7.61 x 4.79 x 3.35 mm

GRADING RESULTS

Carat Weight 1.22 CARAT

Color Grade F

Clarity Grade VS 1

ADDITIONAL GRADING INFORMATION

Polish EXCELLENT

Symmetry EXCELLENT

Fluorescence NONE

Inscription(s) LABGROWN IGI LG492110478

Comments: This Laboratory Grown Diamond was created by Chemical Vapor Deposition (CVD) growth process and may include post-growth treatment. Type IIa



Summary table of report details: 08/28/2021, IGI Report No. LG492110478, EMERALD CUT, 7.61 x 4.79 x 3.35 mm, 1.22 CARAT, Color Grade F, Clarity Grade VS 1, Depth 69.9%, Table 65%, Thin, Long, EXCELLENT, EXCELLENT, NONE, LABGROWN IGI LG492110478.

This Laboratory Grown Diamond was created by Chemical Vapor Deposition (CVD) growth process and may include post-growth treatment. Type IIa