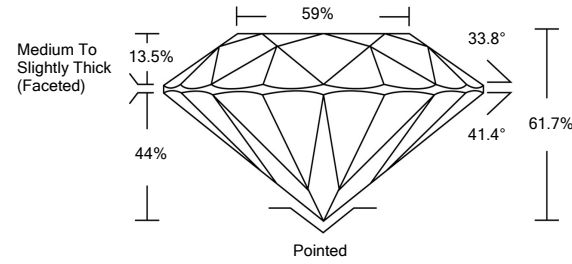




LG492110776

LABORATORY GROWN DIAMOND REPORT

PROPORTIONS

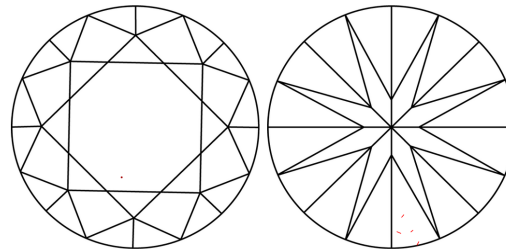


GRADING SCALES

Table with 5 columns for Color Grading Scale (CL, NC, FT, VLT, LT) and Clarity (10x) Grading Scale (FL, IF, VVS, VS, SI, I).

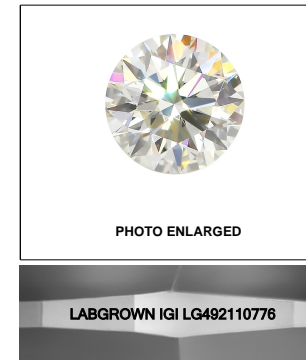
The laboratory grown diamond described in this Report (Report) has been graded, tested, analyzed, examined and/or inscribed by International Gemological Institute (IGI). A laboratory grown diamond is one that has essentially the same chemical, physical and optical properties as a mined diamond...

CLARITY CHARACTERISTICS



KEY TO SYMBOLS

Red symbols indicate internal characteristics. Green symbols indicate external characteristics.



LASERSCRIBE<sup>SM</sup>

09/02/2021

IGI Report Number LG492110776

Shape and Cutting Style ROUND BRILLIANT

Measurements 7.39 - 7.44 x 4.58 mm

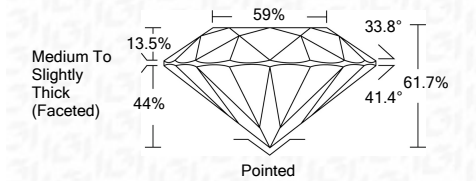
GRADING RESULTS

Carat Weight 1.55 CARAT

Color Grade I

Clarity Grade VVS 2

Cut Grade IDEAL



ADDITIONAL GRADING INFORMATION

Polish EXCELLENT

Symmetry EXCELLENT

Fluorescence NONE

Inscription(s) LABGROWN IGI LG492110776

Comments: This Laboratory Grown Diamond was created by Chemical Vapor Deposition (CVD) growth process and may include post-growth treatment. Type IIa



IGI

Summary table of report details: 09/02/2021, IGI Report No. LG492110776, ROUND BRILLIANT, 7.39 - 7.44 x 4.58 mm, 1.55 CARAT, VVS 2, IDEAL, 61.7%, 59%, Medium To Slightly Thick (Faceted), Pointed, EXCELLENT, EXCELLENT, NONE, LABGROWN IGI LG492110776.



09/02/2021

IGI Report No. LG492110776

ROUND BRILLIANT

7.39 - 7.44 x 4.58 mm

Carat Weight

1.55 CARAT

Color Grade

I

Clarity Grade

VVS 2

Cut Grade

IDEAL

Depth

61.7%

Table

59%

Girdle

Medium To Slightly Thick (Faceted)

Culet

Pointed

Polish

EXCELLENT

Symmetry

EXCELLENT

Fluorescence

NONE

Inscription(s)

LABGROWN IGI LG492110776

Comments:

This Laboratory Grown Diamond was created by Chemical Vapor Deposition (CVD) growth process and may include post-growth treatment. Type IIa