



LABORATORY GROWN DIAMOND REPORT

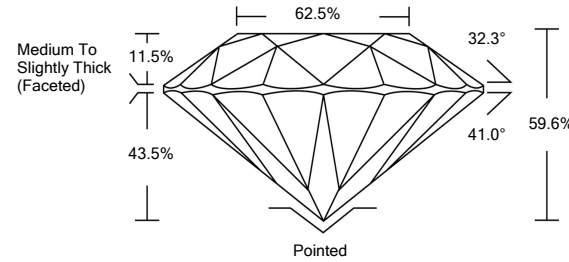
LG492111156

GRADING SCALES

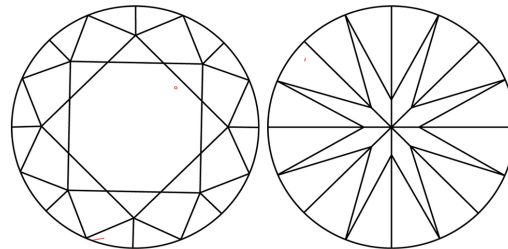
Table with 5 columns for Color Grading Scale (CL, NC, FT, VLT, LT) and Clarity (10x) Grading Scale (FL, IF, VVS, VS, SI, I).

The laboratory grown diamond described in this Report (Report) has been graded, tested, analyzed, examined and/or inscribed by International Gemological Institute (IGI). A laboratory grown diamond is one that has essentially the same chemical, physical and optical properties as a mined diamond...

PROPORTIONS

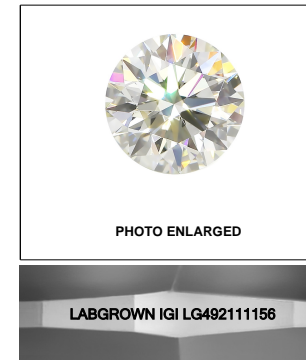


CLARITY CHARACTERISTICS



KEY TO SYMBOLS

Red symbols indicate internal characteristics. Green symbols indicate external characteristics.



LASERSCRIBE<sup>SM</sup>

08/26/2021

IGI Report Number LG492111156

Shape and Cutting Style ROUND BRILLIANT

Measurements 7.40 - 7.42 x 4.41 mm

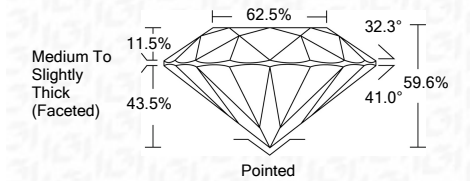
GRADING RESULTS

Carat Weight 1.50 CARAT

Color Grade I

Clarity Grade VS 1

Cut Grade VERY GOOD



ADDITIONAL GRADING INFORMATION

Polish EXCELLENT

Symmetry EXCELLENT

Fluorescence NONE

Inscription(s) LABGROWN IGI LG492111156

Comments: This Laboratory Grown Diamond was created by Chemical Vapor Deposition (CVD) growth process and may include post-growth treatment. Type IIa



IGI

Summary table of report details: 08/26/2021, IGI Report No. LG492111156, ROUND BRILLIANT, 7.40 - 7.42 x 4.41 mm, 1.50 CARAT, VS 1, VERY GOOD, 59.6%, 62.5%, Medium To Slightly Thick (Faceted), Pointed, EXCELLENT, EXCELLENT, NONE, LABGROWN IGI LG492111156.

