



LABORATORY GROWN DIAMOND REPORT

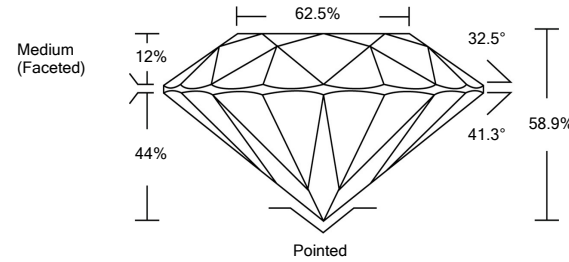
LG492111174

GRADING SCALES

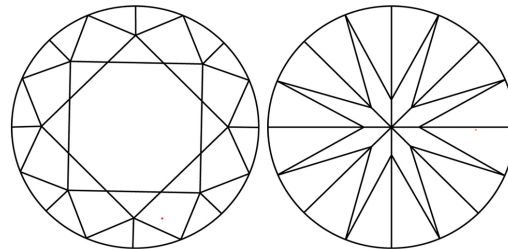
Table with 5 columns for Color Grading Scale (CL, NC, FT, VLT, LT) and Clarity (10x) Grading Scale (FL, IF, VVS, VS, SI, I).

The laboratory grown diamond described in this Report (Report) has been graded, tested, analyzed, examined and/or inscribed by International Gemological Institute (IGI). A laboratory grown diamond is one that has essentially the same chemical, physical and optical properties as a mined diamond...

PROPORTIONS

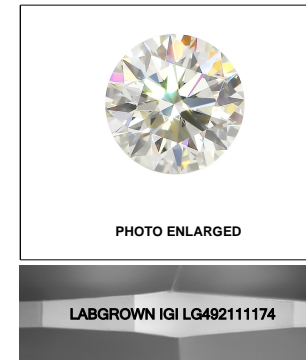


CLARITY CHARACTERISTICS



KEY TO SYMBOLS

Red symbols indicate internal characteristics. Green symbols indicate external characteristics.



LASERSCRIBESM

08/26/2021

IGI Report Number LG492111174

Shape and Cutting Style ROUND BRILLIANT

Measurements 7.47 - 7.52 x 4.42 mm

GRADING RESULTS

Carat Weight 1.50 CARAT

Color Grade I

Clarity Grade VVS 2

Cut Grade EXCELLENT

ADDITIONAL GRADING INFORMATION

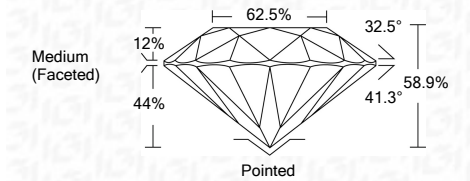
Polish EXCELLENT

Symmetry EXCELLENT

Fluorescence NONE

Inscription(s) LABGROWN IGI LG492111174

Comments: This Laboratory Grown Diamond was created by Chemical Vapor Deposition (CVD) growth process and may include post-growth treatment. Type IIa



08/26/2021

IGI Report Number LG492111174

Shape and Cutting Style ROUND BRILLIANT

Measurements 7.47 - 7.52 x 4.42 mm

GRADING RESULTS

Carat Weight 1.50 CARAT

Color Grade I

Clarity Grade VVS 2

Cut Grade EXCELLENT

ADDITIONAL GRADING INFORMATION

Polish EXCELLENT

Symmetry EXCELLENT

Fluorescence NONE

Inscription(s) LABGROWN IGI LG492111174

Comments: This Laboratory Grown Diamond was created by Chemical Vapor Deposition (CVD) growth process and may include post-growth treatment. Type IIa



IGI

08/26/2021 IGI Report No. LG492111174 ROUND BRILLIANT 7.47 - 7.52 x 4.42 mm 1.50 CARAT I VVS 2 EXCELLENT 58.9% 62.5% Medium (Faceted) Pointed EXCELLENT EXCELLENT NONE LABGROWN IGI LG492111174