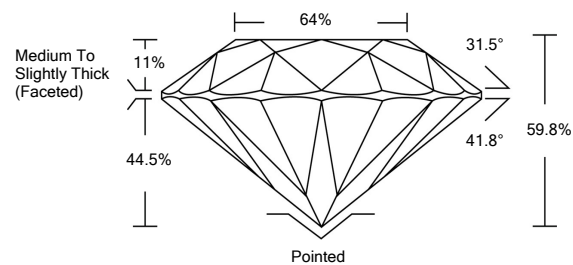




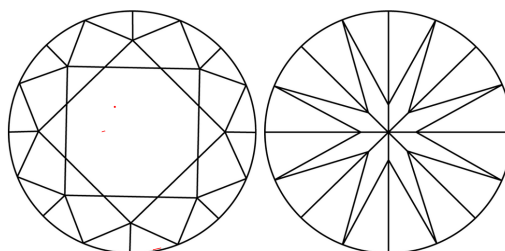
LG492124644

**LABORATORY GROWN DIAMOND REPORT**

**PROPORTIONS**



**CLARITY CHARACTERISTICS**



**KEY TO SYMBOLS**

Red symbols indicate internal characteristics.  
Green symbols indicate external characteristics.

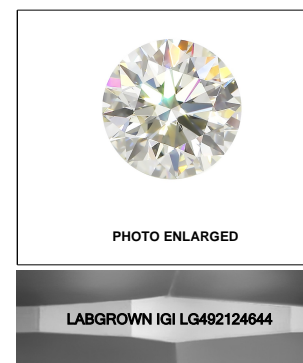
**GRADING SCALES**

COLOR GRADING SCALE	CL COLORLESS D-F	NC NEAR COLORLESS G-J	FT FAINT K-M	VLT VERY LIGHT N-R	LT LIGHT S-Z	
CLARITY (10x) GRADING SCALE	FL FLAWLESS INTERNALLY FLAWLESS	IF INTERNAL FLAWLESS	VVS VERY VERY SLIGHTLY INCLUDED	VS VERY SLIGHTLY INCLUDED	SI SLIGHTLY INCLUDED	I INCLUDED

The laboratory grown diamond described in this Report (Report) has been graded, tested, analyzed, examined and/or inscribed by International Gemological Institute (IGI). A laboratory grown diamond is one that has essentially the same chemical, physical and optical properties as a mined diamond, with the exception of being grown by man (a manufactured product). IGI employs and utilizes those techniques and equipment currently available to IGI, including, without limitation, 10X magnification, corrected triplet loupe, binocular microscope, master color comparison stones, non-contact-optical measuring device, Diamond Sure™, Diamond View™, Spectrophotometer and such other instruments and/or processes as deemed appropriate by IGI. This Report includes advanced security features. A duly accredited gemologist or jeweler can advise you with respect to the importance of and interrelationship between cut, color, clarity and carat weight.

**THIS REPORT IS NEITHER A GUARANTEE, VALUATION, NOR APPRAISAL OF THE GEMSTONE DESCRIBED HEREIN. PLEASE REVIEW THE LIMITATIONS AND RESTRICTIONS SET FORTH ONLINE. FOR ADDITIONAL INFORMATION, IMPORTANT LIMITATIONS AND DISCLAIMERS, PLEASE GO TO WWW.IGI.ORG OR CALL 1-888-BUY-IGIS.**

© INTERNATIONAL GEMOLOGICAL INSTITUTE, INC.



LASERSCRIBE<sup>SM</sup>

September 8, 2021

IGI Report Number

**LG492124644**

Description

**LABORATORY GROWN  
DIAMOND**

Shape and Cutting Style

**ROUND BRILLIANT**

Measurements

**7.41 - 7.45 X 4.44 MM**

**GRADING RESULTS**

Carat Weight

**1.50 CARAT**

Color Grade

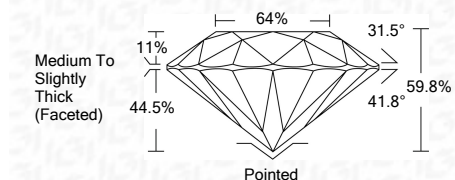
**I**

Clarity Grade

**VVS 2**

Cut Grade

**VERY GOOD**



**ADDITIONAL GRADING INFORMATION**

Polish

**EXCELLENT**

Symmetry

**EXCELLENT**

Fluorescence

**NONE**

Inscription(s)

**LABGROWN IGI LG492124644**

Comments: This Laboratory Grown Diamond was created by Chemical Vapor Deposition (CVD) growth process and may include post-growth treatment.  
Type IIa

September 8, 2021

IGI Report Number

**LG492124644**

Description

**LABORATORY GROWN  
DIAMOND**

Shape and Cutting Style

**ROUND BRILLIANT**

Measurements

**7.41 - 7.45 X 4.44 MM**

**GRADING RESULTS**

Carat Weight

**1.50 CARAT**

Color Grade

**I**

Clarity Grade

**VVS 2**

Cut Grade

**VERY GOOD**

**ADDITIONAL GRADING INFORMATION**

Polish

**EXCELLENT**

Symmetry

**EXCELLENT**

Fluorescence

**NONE**

Inscription(s)

**LABGROWN IGI LG492124644**

Comments: This Laboratory Grown Diamond was created by Chemical Vapor Deposition (CVD) growth process and may include post-growth treatment.  
Type IIa



**IGI**

September 8, 2021	IGI Report No. LG492124644	1.50 CARAT	I	Pointed	EXCELLENT	EXCELLENT	NONE	LABGROWN IGI LG492124644
ROUND BRILLIANT	7.41 - 7.45 X 4.44 MM	VERY GOOD	VVS 2	Medium To Slightly Thick (Faceted)	EXCELLENT	EXCELLENT	NONE	LABGROWN IGI LG492124644
Carat Weight	7.41 - 7.45 X 4.44 MM	64%	59.8%	41.8°	31.5°	11%	44.5%	Pointed
Color Grade	1.50 CARAT	64%	59.8%	41.8°	31.5°	11%	44.5%	Pointed
Clarity Grade	1.50 CARAT	64%	59.8%	41.8°	31.5°	11%	44.5%	Pointed
Cut Grade	1.50 CARAT	64%	59.8%	41.8°	31.5°	11%	44.5%	Pointed
Depth	1.50 CARAT	64%	59.8%	41.8°	31.5°	11%	44.5%	Pointed
Table	1.50 CARAT	64%	59.8%	41.8°	31.5°	11%	44.5%	Pointed
Grade	1.50 CARAT	64%	59.8%	41.8°	31.5°	11%	44.5%	Pointed
Culet	1.50 CARAT	64%	59.8%	41.8°	31.5°	11%	44.5%	Pointed
Polish	1.50 CARAT	64%	59.8%	41.8°	31.5°	11%	44.5%	Pointed
Symmetry	1.50 CARAT	64%	59.8%	41.8°	31.5°	11%	44.5%	Pointed
Fluorescence	1.50 CARAT	64%	59.8%	41.8°	31.5°	11%	44.5%	Pointed
Inscription(s)	1.50 CARAT	64%	59.8%	41.8°	31.5°	11%	44.5%	Pointed
Comments:	1.50 CARAT	64%	59.8%	41.8°	31.5°	11%	44.5%	Pointed