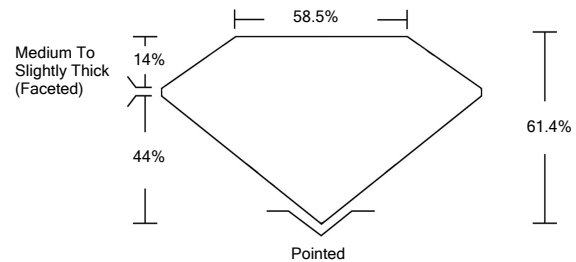




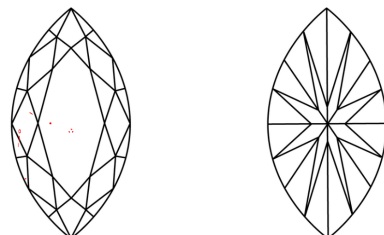
LG494174078

**LABORATORY GROWN DIAMOND REPORT**

**PROPORTIONS**



**CLARITY CHARACTERISTICS**



**KEY TO SYMBOLS**

Red symbols indicate internal characteristics.  
Green symbols indicate external characteristics.

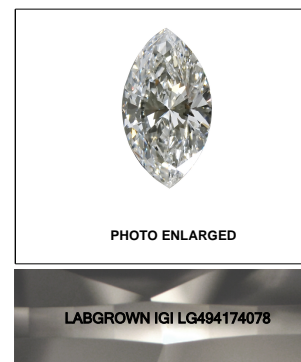
**GRADING SCALES**

COLOR GRADING SCALE	CL COLORLESS D-F	NC NEAR COLORLESS G-J	FT FAINT K-M	VL VERY LIGHT N-R	LT LIGHT S-Z	
CLARITY (10x) GRADING SCALE	FL FLAWLESS INTERNALLY FLAWLESS	IF INTERNAL FLAWLESS	VVS VERY VERY SLIGHTLY INCLUDED	VS VERY SLIGHTLY INCLUDED	SI SLIGHTLY INCLUDED	I INCLUDED

The laboratory grown diamond described in this Report (Report) has been graded, tested, analyzed, examined and/or inscribed by International Gemological Institute (IGI). A laboratory grown diamond is one that has essentially the same chemical, physical and optical properties as a mined diamond, with the exception of being grown by man (a manufactured product). IGI employs and utilizes those techniques and equipment currently available to IGI, including, without limitation, 10X magnification, corrected triplet loupe, binocular microscope, master color comparison stones, non-contact-optical measuring device, Diamond Sure™, Diamond View™, Spectrophotometer and such other instruments and/or processes as deemed appropriate by IGI. This Report includes advanced security features. A duly accredited gemologist or jeweler can advise you with respect to the importance of and interrelationship between cut, color, clarity and carat weight.

**THIS REPORT IS NEITHER A GUARANTEE, VALUATION, NOR APPRAISAL OF THE GEMSTONE DESCRIBED HEREIN. PLEASE REVIEW THE LIMITATIONS AND RESTRICTIONS SET FORTH ONLINE. FOR ADDITIONAL INFORMATION, IMPORTANT LIMITATIONS AND DISCLAIMERS, PLEASE GO TO WWW.IGI.ORG OR CALL 1-888-BUY-IGI.**

© INTERNATIONAL GEMOLOGICAL INSTITUTE, INC.



LASERSCRIBE<sup>SM</sup>

September 15, 2021

IGI Report Number

**LG494174078**

Description

**LABORATORY GROWN  
DIAMOND**

Shape and Cutting Style

**MARQUISE BRILLIANT**

Measurements

**10.31 X 5.42 X 3.33 MM**

**GRADING RESULTS**

Carat Weight

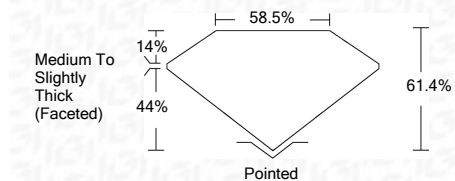
**1.05 CARAT**

Color Grade

**E**

Clarity Grade

**VS 1**



**ADDITIONAL GRADING INFORMATION**

Polish

**EXCELLENT**

Symmetry

**EXCELLENT**

Fluorescence

**NONE**

Inscription(s)

**LABGROWN IGI LG494174078**

Comments: As Grown - No indication of post-growth treatment.  
This Laboratory Grown Diamond was created by High Pressure High Temperature (HPHT) growth process.  
Type II



**IGI**

September 15, 2021	IGI Report No. LG494174078	<b>1.05 CARAT</b>	<b>E</b>
<b>MARQUISE BRILLIANT</b>	<b>10.31 X 5.42 X 3.33 MM</b>	<b>VS 1</b>	<b>61.4%</b>
Carat Weight	Color Grade	Depth	Table
Clarity Grade	Clarity Grade	61.4%	58.5%
Depth	Color Grade	Medium To Slightly Thick (Faceted)	Pointed
Table	Clarity Grade	EXCELLENT	EXCELLENT
Grade	Clarity Grade	EXCELLENT	EXCELLENT
Culet	Clarity Grade	NONE	NONE
Polish	Clarity Grade	LABGROWN IGI	LABGROWN IGI
Symmetry	Clarity Grade	LG494174078	LG494174078
Fluorescence	Clarity Grade		
Inscription(s)	Clarity Grade		
Comments:	Clarity Grade		

As Grown - No indication of post-growth treatment.  
This Laboratory Grown Diamond was created by High Pressure High Temperature (HPHT) growth process.  
Type II