



**INTERNATIONAL
GEMOLOGICAL
INSTITUTE**

ELECTRONIC COPY

**LABORATORY GROWN
DIAMOND REPORT**

LG499197931

**IGI LABORATORY GROWN
DIAMOND ID REPORT**

10/27/2021

IGI Report Number **LG499197931**

PEAR BRILLIANT

6.02 X 3.67 X 2.22 MM

Carat Weight 0.30 CARAT

Color Grade FANCY INTENSE
BLUE

Clarity Grade VS 2

Polish VERY GOOD

Symmetry GOOD

Fluorescence NONE

Inscription(s) LABGROWN IGI
LG499197931

Comments: As Grown - No indication of post-growth treatment.

This Laboratory Grown Diamond was created by High Pressure High Temperature (HPHT) growth process.

**IGI LABORATORY GROWN
DIAMOND ID REPORT**

10/27/2021

IGI Report Number **LG499197931**

PEAR BRILLIANT

6.02 X 3.67 X 2.22 MM

Carat Weight 0.30 CARAT

Color Grade FANCY INTENSE
BLUE

Clarity Grade VS 2

Polish VERY GOOD

Symmetry GOOD

Fluorescence NONE

Inscription(s) LABGROWN IGI
LG499197931

Comments: As Grown - No indication of post-growth treatment.

This Laboratory Grown Diamond was created by High Pressure High Temperature (HPHT) growth process.

LABORATORY GROWN DIAMOND REPORT

IGI LABORATORY GROWN DIAMOND IDENTIFICATION REPORT

10/27/2021

IGI Report Number LG499197931

Shape and Cutting Style PEAR BRILLIANT

Measurements 6.02 X 3.67 X 2.22 MM

GRADING RESULTS

Carat Weight 0.30 CARAT

Color Grade FANCY INTENSE BLUE

Clarity Grade VS 2

ADDITIONAL GRADING INFORMATION

Polish VERY GOOD

Symmetry GOOD

Fluorescence NONE

Inscription(s) LABGROWN IGI LG499197931

Comments: As Grown - No indication of post-growth treatment.

This Laboratory Grown Diamond was created by High Pressure High Temperature (HPHT) growth process.

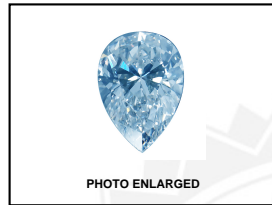


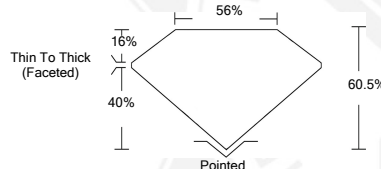
PHOTO ENLARGED



LABGROWN IGI LG499197931



LASERSCRIBESM



This Laboratory Grown Diamond (LGD) described in this Report has been analyzed, graded and Laserscribed® by International Gemological Institute (IGI). A LGD has essentially the chemical, physical and optical properties as a mined diamond, with the exception of being man-made (a manufactured product). LGD's are typically produced by CVD (chemical vapor deposition) or by HPHT (high pressure high temperature) growth processes and may include post growth modifications to change the color. IGI utilizes the most advanced techniques and equipment currently available including, binocular microscopes, diamond color masters, non-contact-optical measuring device, a wide range analytical techniques including FTIR, UV-VIS-NIR, raman spectroscopy, and fluorescence analysis at various excitation wavelengths. This Report includes advanced security features. This Report is neither a guarantee, valuation nor appraisal and by making the report IGI does not agree to purchase or replace the article.

INTERNATIONAL GEMOLOGICAL INSTITUTE, INC

THIS DOCUMENT WAS PRODUCED WITH THE FOLLOWING SECURITY MEASURES: SPECIAL DOCUMENT PAPER, INK SCREENS, WATERMARK BACKGROUND DESIGN, HOLOGRAM AND OTHER SECURITY FEATURES NOT LISTED AND DO EXCEED DOCUMENT SECURITY INDUSTRY GUIDELINES.

For Terms & Conditions and to verify this report, please visit www.igi.org