



508155165

**DIAMOND REPORT**

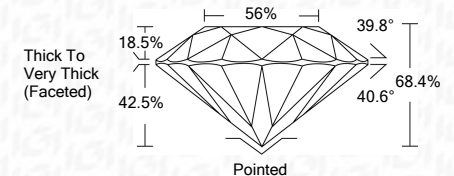
**ELECTRONIC COPY**



January 12, 2022  
 IGI Report Number 508155165  
 Description NATURAL DIAMOND  
 Shape and Cutting Style ROUND BRILLIANT  
 Measurements 5.92 - 6.07 x 4.12 mm

**GRADING RESULTS**

Carat Weight 1.00 CARAT  
 Color Grade J  
 Clarity Grade VS 1  
 Cut Grade GOOD



January 12, 2022  
 IGI Report Number 508155165  
 Description NATURAL DIAMOND  
 Shape and Cutting Style ROUND BRILLIANT  
 Measurements 5.92 - 6.07 x 4.12 mm

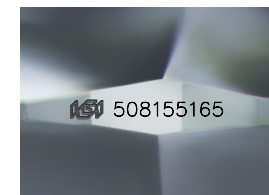
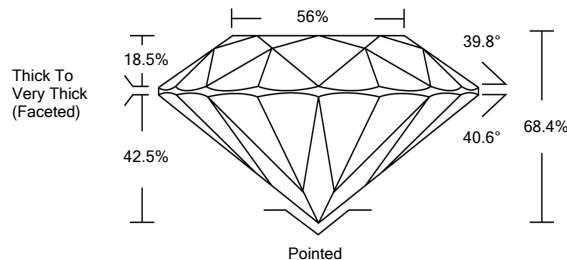
**GRADING RESULTS**

Carat Weight 1.00 CARAT  
 Color Grade J  
 Clarity Grade VS 1  
 Cut Grade GOOD

**ADDITIONAL GRADING INFORMATION**

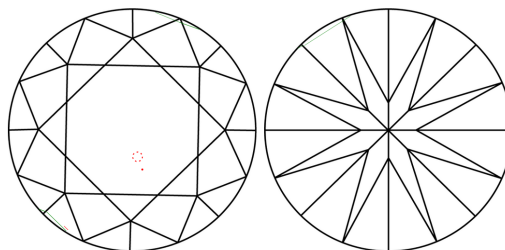
Polish EXCELLENT  
 Symmetry GOOD  
 Fluorescence NONE  
 Inscription(s) IGI 508155165

**PROPORTIONS**



Sample Image Used

**CLARITY CHARACTERISTICS**



**KEY TO SYMBOLS**

Red symbols indicate internal characteristics.  
 Green symbols indicate external characteristics.

**COLOR**

D - F	G - J	K - M	N - R	S - Z	FANCY
Colorless	Near Colorless	Slightly Tinted	Very Light Color	Light Color	

**CLARITY**

IF	VS <sup>1-2</sup>	VS <sup>1-2</sup>	SI <sup>1-2</sup>	I <sup>1-3</sup>
Internally Flawless	Very Very Slightly Included	Very Slightly Included	Slightly Included	Included

**ADDITIONAL GRADING INFORMATION**

Polish EXCELLENT  
 Symmetry GOOD  
 Fluorescence NONE  
 Inscription(s) IGI 508155165



**IGI**

January 12, 2022  
 IGI Report No 508155165  
 NATURAL DIAMOND  
 ROUND BRILLIANT  
 5.92 - 6.07 x 4.12 mm  
 Carat Weight 1.00 CARAT  
 Color Grade J  
 Clarity Grade VS 1  
 Cut Grade GOOD  
 Depth 68.4%  
 Table 56%  
 Girdle Thick To Very Thick (Faceted)  
 Culet Pointed  
 Polish EXCELLENT  
 Symmetry GOOD  
 Fluorescence NONE  
 Inscription(s) IGI 508155165