



ELECTRONIC COPY

LABORATORY GROWN DIAMOND REPORT

February 1, 2022	
IGI Report Number	LG514289512
Description	LABORATORY GROWN DIAMOND
Shape and Cutting Style	ROUND BRILLIANT
Measurements	9.36 - 9.39 X 5.67 MM
GRADING RESULTS	
Carat Weight	3.05 CARATS
Color Grade	J
Clarity Grade	SI 1
Cut Grade	EXCELLENT
ADDITIONAL GRADING INFORMATION	
Polish	EXCELLENT
Symmetry	EXCELLENT
Fluorescence	NONE
Inscription(s)	LABGROWN IGI LG514289512

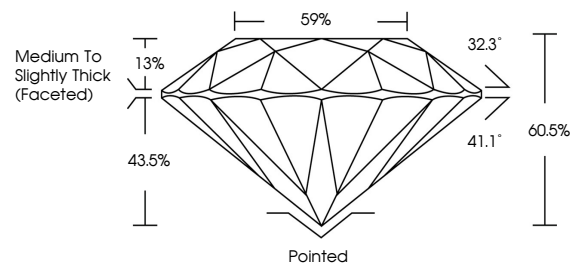
Comments:
This Laboratory Grown Diamond was created by Chemical Vapor Deposition (CVD) growth process and may include post-growth treatment.
Type IIa

LABORATORY GROWN DIAMOND REPORT

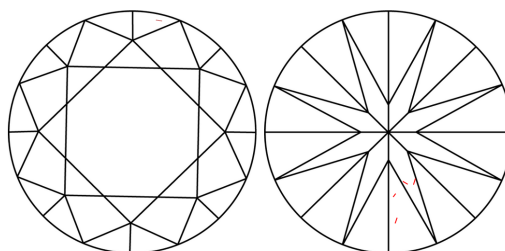
LG514289512

Report verification at igi.org

PROPORTIONS



CLARITY CHARACTERISTICS



KEY TO SYMBOLS

Red symbols indicate internal characteristics.
Green symbols indicate external characteristics.

**LABORATORY GROWN
DIAMOND REPORT**

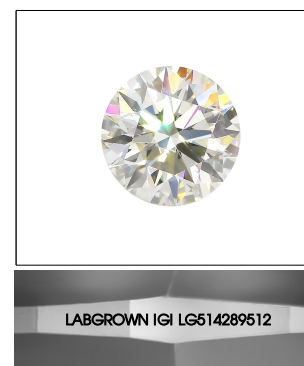
GRADING SCALES

CLARITY

IF	VVS ¹⁻²	VS ¹⁻²	SI ¹⁻²	I ¹⁻³
Internally Flawless	Very Very Slightly Included	Very Slightly Included	Slightly Included	Included

COLOR

D	E	F	G	H	I	J	Faint	Very Light	Light

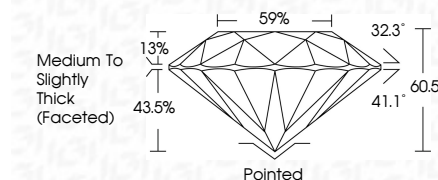


LASERSCRIBESM

Sample Image Used

LABORATORY GROWN DIAMOND REPORT

February 1, 2022	
IGI Report Number	LG514289512
Description	LABORATORY GROWN DIAMOND
Shape and Cutting Style	ROUND BRILLIANT
Measurements	9.36 - 9.39 X 5.67 MM
GRADING RESULTS	
Carat Weight	3.05 CARATS
Color Grade	J
Clarity Grade	SI 1
Cut Grade	EXCELLENT



ADDITIONAL GRADING INFORMATION

Polish	EXCELLENT
Symmetry	EXCELLENT
Fluorescence	NONE
Inscription(s)	LABGROWN IGI LG514289512

Comments:
This Laboratory Grown Diamond was created by Chemical Vapor Deposition (CVD) growth process and may include post-growth treatment.
Type IIa



IGI

February 1, 2022	
IGI Report No LG514289512	
ROUND BRILLIANT	
Carat Weight	3.05 CARATS
Color Grade	J
Clarity Grade	SI 1
Cut Grade	EXCELLENT
Depth	60.5%
Table	59%
Grade	Medium to Slightly Thick (Faceted)
Culet	Pointed
Polish	EXCELLENT
Symmetry	EXCELLENT
Fluorescence	NONE
Inscription(s)	LABGROWN IGI LG514289512
Comments:	This Laboratory Grown Diamond was created by Chemical Vapor Deposition (CVD) growth process and may include post-growth treatment. Type IIa