

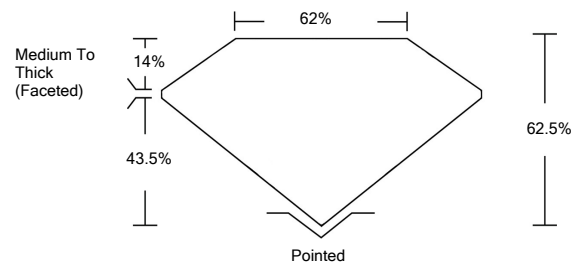


ELECTRONIC COPY

LABORATORY GROWN DIAMOND REPORT

LG516256838

PROPORTIONS



GRADING SCALES

COLOR GRADING SCALE	CL	NC	FT	VL	LT	
	COLORLESS D-F	NEAR COLORLESS G-J	FAINT K-M	VERY LIGHT N-R	LIGHT S-Z	
CLARITY (10x) GRADING SCALE	FL	IF	VVS	VS	SI	I
	FLAWLESS INTERNALLY FLAWLESS	VERY VERY SLIGHTLY INCLUDED	VERY SLIGHTLY INCLUDED	SLIGHTLY INCLUDED	INCLUDED	INCLUDED

February 11, 2022

IGI Report Number

LG516256838

Description

LABORATORY GROWN DIAMOND

Shape and Cutting Style

OVAL BRILLIANT

Measurements

12.57 X 9.13 X 5.71 MM

GRADING RESULTS

Carat Weight

4.21 CARATS

Color Grade

G

Clarity Grade

VS 2

February 11, 2022

IGI Report Number

LG516256838

Description

LABORATORY GROWN DIAMOND

Shape and Cutting Style

OVAL BRILLIANT

Measurements

12.57 X 9.13 X 5.71 MM

GRADING RESULTS

Carat Weight

4.21 CARATS

Color Grade

G

Clarity Grade

VS 2

ADDITIONAL GRADING INFORMATION

Polish

EXCELLENT

Symmetry

EXCELLENT

Fluorescence

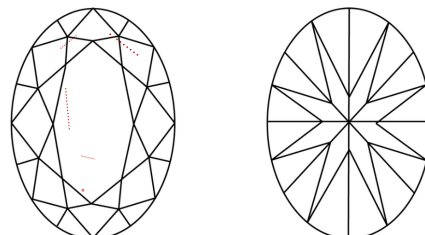
NONE

Inscription(s)

LABGROWN IGI LG516256838

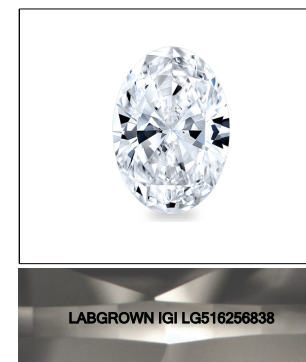
Comments: This Laboratory Grown Diamond was created by Chemical Vapor Deposition (CVD) growth process and may include post-growth treatment.
Type IIa

CLARITY CHARACTERISTICS

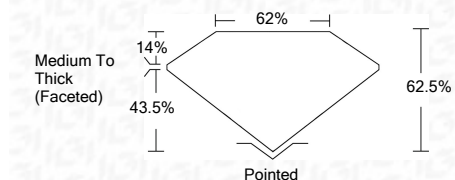


KEY TO SYMBOLS

Red symbols indicate internal characteristics.
Green symbols indicate external characteristics.



LASERSCRIBESM
Sample Image Used



ADDITIONAL GRADING INFORMATION

Polish

EXCELLENT

Symmetry

EXCELLENT

Fluorescence

NONE

Inscription(s)

LABGROWN IGI LG516256838

Comments: This Laboratory Grown Diamond was created by Chemical Vapor Deposition (CVD) growth process and may include post-growth treatment.
Type IIa



IGI



February 11, 2022	IGI Report No. LG516256838	OVAL BRILLIANT	4.21 CARATS	G
		12.57 X 9.13 X 5.71 MM	VS 2	62.5%
		Medium To Thick (Faceted)	62%	Pointed
			EXCELLENT	EXCELLENT
			EXCELLENT	EXCELLENT
			NONE	NONE
			LABGROWN IGI	LABGROWN IGI
			LG516256838	LG516256838

Comments: This Laboratory Grown Diamond was created by Chemical Vapor Deposition (CVD) growth process and may include post-growth treatment.
Type IIa