



ELECTRONIC COPY

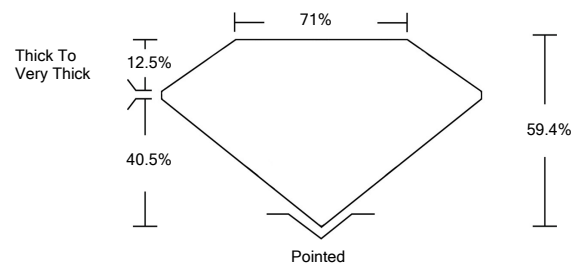
LABORATORY GROWN DIAMOND REPORT

| | |
|---------------------------------------|------------------------------------------------------------|
| February 26, 2022 | |
| IGI Report Number | LG519231513 |
| Description | LABORATORY GROWN DIAMOND |
| Shape and Cutting Style | CUT CORNERED RECTANGULAR MODIFIED BRILLIANT |
| Measurements | 11.86 X 8.54 X 5.07 MM |
| GRADING RESULTS | |
| Carat Weight | 5.00 CARATS |
| Color Grade | F |
| Clarity Grade | VS 1 |
| ADDITIONAL GRADING INFORMATION | |
| Polish | EXCELLENT |
| Symmetry | EXCELLENT |
| Fluorescence | NONE |
| Inscription(s) | LABGROWN IGI LG519231513 |

Comments: This Laboratory Grown Diamond was created by Chemical Vapor Deposition (CVD) growth process and may include post-growth treatment. Type IIa

LG519231513

PROPORTIONS



CLARITY CHARACTERISTICS

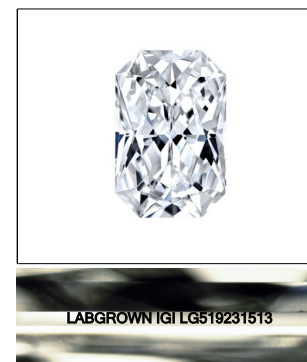


KEY TO SYMBOLS

Red symbols indicate internal characteristics.
Green symbols indicate external characteristics.

GRADING SCALES

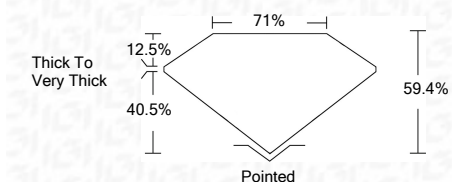
| | | | | | | |
|-----------------------------|------------------------------|-----------------------------|------------------------|-------------------|-----------|---|
| COLOR GRADING SCALE | CL | NC | FT | VLT | LT | |
| | COLORLESS D-F | NEAR COLORLESS G-J | FAINT K-M | VERY LIGHT N-R | LIGHT S-Z | |
| CLARITY (10x) GRADING SCALE | FL | IF | VVS | VS | SI | I |
| | FLAWLESS INTERNALLY FLAWLESS | VERY VERY SLIGHTLY INCLUDED | VERY SLIGHTLY INCLUDED | SLIGHTLY INCLUDED | INCLUDED | |



LASERSCRIBESM

Sample Image Used

| | |
|-------------------------|------------------------------------------------------------|
| February 26, 2022 | |
| IGI Report Number | LG519231513 |
| Description | LABORATORY GROWN DIAMOND |
| Shape and Cutting Style | CUT CORNERED RECTANGULAR MODIFIED BRILLIANT |
| Measurements | 11.86 X 8.54 X 5.07 MM |
| GRADING RESULTS | |
| Carat Weight | 5.00 CARATS |
| Color Grade | F |
| Clarity Grade | VS 1 |



ADDITIONAL GRADING INFORMATION

| | |
|----------------|---------------------------------|
| Polish | EXCELLENT |
| Symmetry | EXCELLENT |
| Fluorescence | NONE |
| Inscription(s) | LABGROWN IGI LG519231513 |

Comments: This Laboratory Grown Diamond was created by Chemical Vapor Deposition (CVD) growth process and may include post-growth treatment. Type IIa



IGI

| | |
|----------------------------------------------------------------------------------------------------------------------------------------------------------|--|
| February 26, 2022 | |
| IGI Report No. LG519231513 | |
| CUT CORNERED RECT. MODIFIED BRILLIANT | |
| Measurements 11.86 X 8.54 X 5.07 MM | |
| Carat Weight 5.00 CARATS | |
| Color Grade F | |
| Clarity Grade VS 1 | |
| Depth 60.4% | |
| Table 71% | |
| Girdle Thick To Very Thick | |
| Culet Pointed | |
| Polish EXCELLENT | |
| Symmetry EXCELLENT | |
| Fluorescence NONE | |
| Inscription(s) LABGROWN IGI LG519231513 | |
| Comments: This Laboratory Grown Diamond was created by Chemical Vapor Deposition (CVD) growth process and may include post-growth treatment. Type IIa | |

