

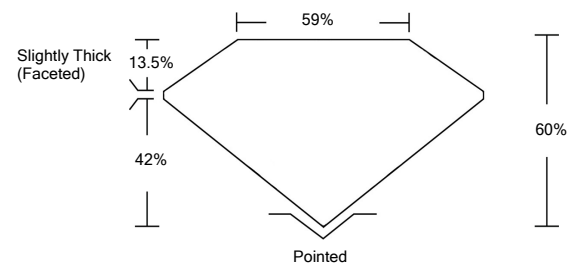


ELECTRONIC COPY

LABORATORY GROWN DIAMOND REPORT

LG519239260

PROPORTIONS



GRADING SCALES

COLOR GRADING SCALE	CL	NC	FT	VL	LT	
	COLORLESS D-F	NEAR COLORLESS G-J	FAINT K-M	VERY LIGHT N-R	LIGHT S-Z	
CLARITY (10x) GRADING SCALE	FL	IF	VVS	VS	SI	I
	FLAWLESS INTERNALLY FLAWLESS	VERY VERY SLIGHTLY INCLUDED	VERY SLIGHTLY INCLUDED	SLIGHTLY INCLUDED	INCLUDED	

March 17, 2022

IGI Report Number

LG519239260

Description

LABORATORY GROWN DIAMOND

Shape and Cutting Style

OVAL BRILLIANT

Measurements

12.08 X 8.46 X 5.08 MM

GRADING RESULTS

Carat Weight

3.29 CARATS

Color Grade

E

Clarity Grade

VVS 1

March 17, 2022

IGI Report Number

LG519239260

Description

LABORATORY GROWN DIAMOND

Shape and Cutting Style

OVAL BRILLIANT

Measurements

12.08 X 8.46 X 5.08 MM

GRADING RESULTS

Carat Weight

3.29 CARATS

Color Grade

E

Clarity Grade

VVS 1

ADDITIONAL GRADING INFORMATION

Polish

EXCELLENT

Symmetry

EXCELLENT

Fluorescence

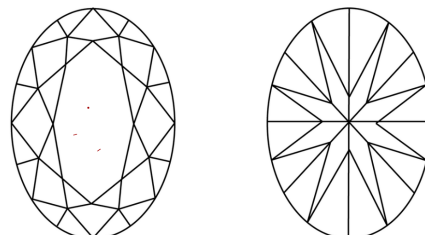
NONE

Inscription(s)

LABGROWN IGI LG519239260

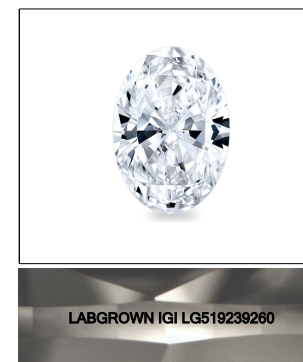
Comments: This Laboratory Grown Diamond was created by Chemical Vapor Deposition (CVD) growth process and may include post-growth treatment.
Type IIa

CLARITY CHARACTERISTICS



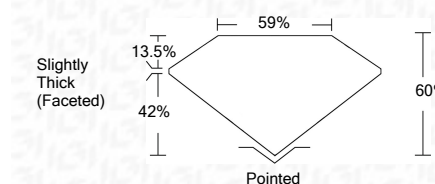
KEY TO SYMBOLS

Red symbols indicate internal characteristics.
Green symbols indicate external characteristics.



LASERSCRIBESM

Sample Image Used



ADDITIONAL GRADING INFORMATION

Polish

EXCELLENT

Symmetry

EXCELLENT

Fluorescence

NONE

Inscription(s)

LABGROWN IGI LG519239260

Comments: This Laboratory Grown Diamond was created by Chemical Vapor Deposition (CVD) growth process and may include post-growth treatment.
Type IIa



IGI

IGI Report No. LG519239260	3.29 CARATS	E	Pointed
OVAL BRILLIANT	VVS 1	EXCELLENT	EXCELLENT
12.08 X 8.46 X 5.08 MM	60%	EXCELLENT	EXCELLENT
Carat Weight	59%	NONE	NONE
Color Grade	Slightly Thick (Faceted)	LABGROWN IGI	LABGROWN IGI
Clarity Grade		LG519239260	LG519239260
Depth			
Table			
Girdle			
Culet			
Polish			
Symmetry			
Fluorescence			
Inscription(s)			
Comments:			

This Laboratory Grown Diamond was created by Chemical Vapor Deposition (CVD) growth process and may include post-growth treatment.
Type IIa