

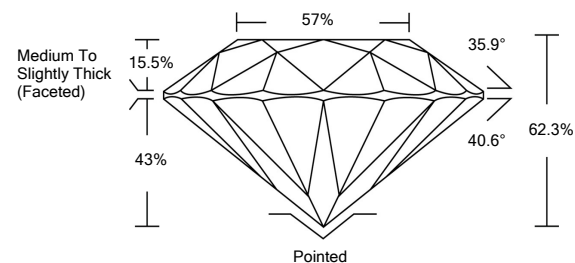


ELECTRONIC COPY

LG519268490

LABORATORY GROWN DIAMOND REPORT

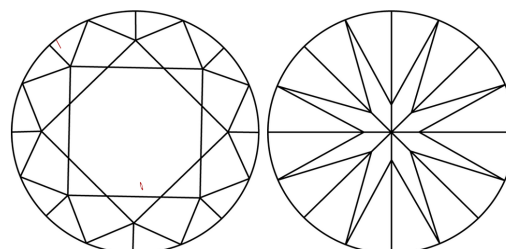
PROPORTIONS



GRADING SCALES

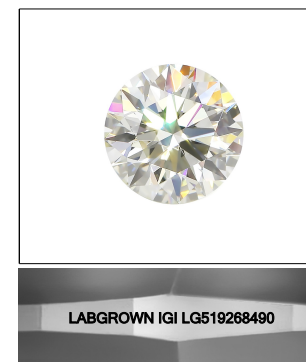
| | | | | | | |
|-----------------------------|------------------------------|-----------------------------|------------------------|-------------------|-----------|---|
| COLOR GRADING SCALE | CL | NC | FT | VL | LT | |
| | COLORLESS D-F | NEAR COLORLESS G-J | FAINT K-M | VERY LIGHT N-R | LIGHT S-Z | |
| CLARITY (10x) GRADING SCALE | FL | IF | VVS | VS | SI | I |
| | FLAWLESS INTERNALLY FLAWLESS | VERY VERY SLIGHTLY INCLUDED | VERY SLIGHTLY INCLUDED | SLIGHTLY INCLUDED | INCLUDED | |

CLARITY CHARACTERISTICS



KEY TO SYMBOLS

Red symbols indicate internal characteristics.
Green symbols indicate external characteristics.



LASERSCRIBESM

Sample Image Used

March 22, 2022

IGI Report Number

LG519268490

Description

**LABORATORY GROWN
DIAMOND**

Shape and Cutting Style

ROUND BRILLIANT

Measurements

7.80 - 7.85 X 4.87 MM

GRADING RESULTS

Carat Weight

1.86 CARAT

Color Grade

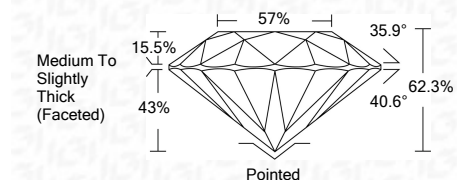
D

Clarity Grade

VS 2

Cut Grade

IDEAL



ADDITIONAL GRADING INFORMATION

Polish

EXCELLENT

Symmetry

EXCELLENT

Fluorescence

NONE

Inscription(s)

LABGROWN IGI LG519268490

Comments: As Grown - No indication of post-growth treatment.
This Laboratory Grown Diamond was created by High Pressure High Temperature (HPHT) growth process.
Type II

March 22, 2022

IGI Report Number

LG519268490

Description

**LABORATORY GROWN
DIAMOND**

Shape and Cutting Style

ROUND BRILLIANT

Measurements

7.80 - 7.85 X 4.87 MM

GRADING RESULTS

Carat Weight

1.86 CARAT

Color Grade

D

Clarity Grade

VS 2

Cut Grade

IDEAL

ADDITIONAL GRADING INFORMATION

Polish

EXCELLENT

Symmetry

EXCELLENT

Fluorescence

NONE

Inscription(s)

LABGROWN IGI LG519268490

Comments: As Grown - No indication of post-growth treatment.
This Laboratory Grown Diamond was created by High Pressure High Temperature (HPHT) growth process.
Type II



IGI

| | | | | | | | | | | | | |
|----------------------------|------------|---|------|-------|-------|-----|------------------------------------|---------|-----------|-----------|------|--------------------------|
| IGI Report No. LG519268490 | 1.86 CARAT | D | VS 2 | IDEAL | 62.3% | 57% | Medium To Slightly Thick (Faceted) | Pointed | EXCELLENT | EXCELLENT | NONE | LABGROWN IGI LG519268490 |
| ROUND BRILLIANT | | | | | | | | | | | | |
| 7.80 - 7.85 X 4.87 MM | | | | | | | | | | | | |
| Carat Weight | | | | | | | | | | | | |
| Color Grade | | | | | | | | | | | | |
| Clarity Grade | | | | | | | | | | | | |
| Cut Grade | | | | | | | | | | | | |
| Depth | | | | | | | | | | | | |
| Table | | | | | | | | | | | | |
| Girdle | | | | | | | | | | | | |
| Culet | | | | | | | | | | | | |
| Polish | | | | | | | | | | | | |
| Symmetry | | | | | | | | | | | | |
| Fluorescence | | | | | | | | | | | | |
| Inscription(s) | | | | | | | | | | | | |

Comments: As Grown - No indication of post-growth treatment.
This Laboratory Grown Diamond was created by High Pressure High Temperature (HPHT) growth process.
Type II