



ELECTRONIC COPY

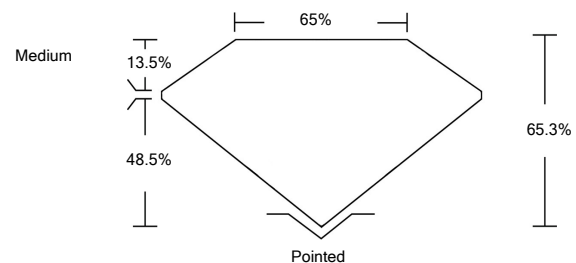
LABORATORY GROWN DIAMOND REPORT

|                                       |   |
|---------------------------------------|---|
| April 12, 2022                        |   |
| IGI Report Number                     | LG522230457                                 |
| Description                           | LABORATORY GROWN DIAMOND                    |
| Shape and Cutting Style               | CUT CORNERED RECTANGULAR MODIFIED BRILLIANT |
| Measurements                          | 8.41 X 5.76 X 3.76 MM                       |
| <b>GRADING RESULTS</b>                |   |
| Carat Weight                          | 1.54 CARAT                                  |
| Color Grade                           | G   |
| Clarity Grade                         | VS 1  |
| <b>ADDITIONAL GRADING INFORMATION</b> |   |
| Polish                                | EXCELLENT                                   |
| Symmetry                              | EXCELLENT                                   |
| Fluorescence                          | NONE  |
| Inscription(s)                        | LABGROWN IGI LG522230457                    |

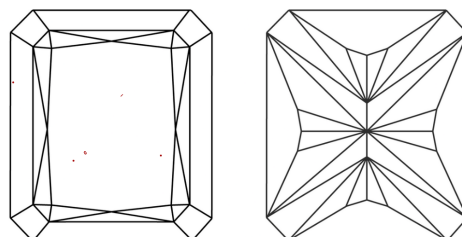
Comments: This Laboratory Grown Diamond was created by Chemical Vapor Deposition (CVD) growth process and may include post-growth treatment. Type IIa

LG522230457

PROPORTIONS



CLARITY CHARACTERISTICS

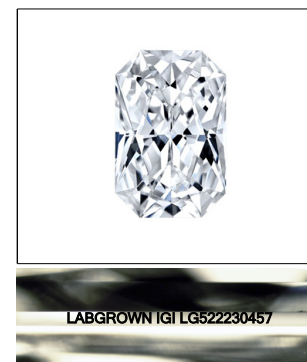


KEY TO SYMBOLS

Red symbols indicate internal characteristics. Green symbols indicate external characteristics.

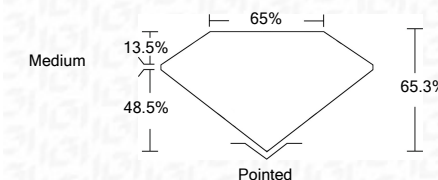
GRADING SCALES

|                             |                              |                             |                        |                   |           |   |
|-----------------------------|------------------------------|-----------------------------|------------------------|-------------------|-----------|---|
| COLOR GRADING SCALE         | CL                           | NC                          | FT                     | VLT               | LT        |   |
|                             | COLORLESS D-F                | NEAR COLORLESS G-J          | FAINT K-M              | VERY LIGHT N-R    | LIGHT S-Z |   |
| CLARITY (10x) GRADING SCALE | FL                           | IF                          | VVS                    | VS                | SI        | I |
|                             | FLAWLESS INTERNALLY FLAWLESS | VERY VERY SLIGHTLY INCLUDED | VERY SLIGHTLY INCLUDED | SLIGHTLY INCLUDED | INCLUDED  |   |



LASERSCRIBE<sup>SM</sup> Sample Image Used

|                         |   |
|-------------------------|---|
| April 12, 2022          |   |
| IGI Report Number       | LG522230457                                 |
| Description             | LABORATORY GROWN DIAMOND                    |
| Shape and Cutting Style | CUT CORNERED RECTANGULAR MODIFIED BRILLIANT |
| Measurements            | 8.41 X 5.76 X 3.76 MM                       |
| <b>GRADING RESULTS</b>  |   |
| Carat Weight            | 1.54 CARAT                                  |
| Color Grade             | G   |
| Clarity Grade           | VS 1  |



|                                       |                          |
|---------------------------------------|--------------------------|
| <b>ADDITIONAL GRADING INFORMATION</b> |                          |
| Polish                                | EXCELLENT                |
| Symmetry                              | EXCELLENT                |
| Fluorescence                          | NONE                     |
| Inscription(s)                        | LABGROWN IGI LG522230457 |

Comments: This Laboratory Grown Diamond was created by Chemical Vapor Deposition (CVD) growth process and may include post-growth treatment. Type IIa



IGI

|                                       |                            |
|---------------------------------------|----------------------------|
| April 12, 2022                        | IGI Report No. LG522230457 |
| CUT CORNERED RECT. MODIFIED BRILLIANT | 8.41 X 5.76 X 3.76 MM      |
| Carat Weight                          | 1.54 CARAT                 |
| Color Grade                           | G                          |
| Clarity Grade                         | VS 1                       |
| Depth                                 | 65.3%                      |
| Table                                 | 65%                        |
| Girdle                                | Medium                     |
| Culet                                 | Pointed                    |
| Polish                                | EXCELLENT                  |
| Symmetry                              | EXCELLENT                  |
| Fluorescence                          | NONE                       |
| Inscription(s)                        | LABGROWN IGI LG522230457   |
| Comments:                             |                            |

This Laboratory Grown Diamond was created by Chemical Vapor Deposition (CVD) growth process and may include post-growth treatment. Type IIa