



ELECTRONIC COPY

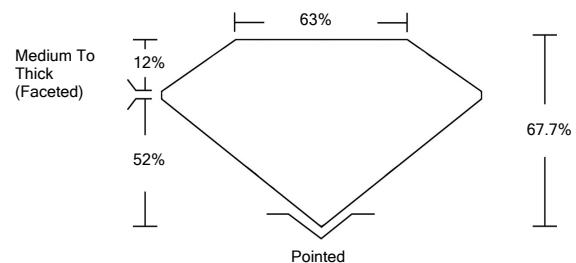
LABORATORY GROWN DIAMOND REPORT

April 14, 2022	
IGI Report Number	LG523290148
Description	LABORATORY GROWN DIAMOND
Shape and Cutting Style	SQUARE CUSHION BRILLIANT
Measurements	6.68 X 6.66 X 4.51 MM
GRADING RESULTS	
Carat Weight	1.52 CARAT
Color Grade	H
Clarity Grade	VS 1
ADDITIONAL GRADING INFORMATION	
Polish	EXCELLENT
Symmetry	EXCELLENT
Fluorescence	NONE
Inscription(s)	LABGROWN IGI LG523290148

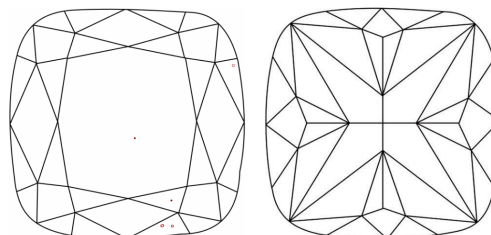
Comments: This Laboratory Grown Diamond was created by Chemical Vapor Deposition (CVD) growth process and may include post-growth treatment.
Type IIa

LG523290148

PROPORTIONS



CLARITY CHARACTERISTICS

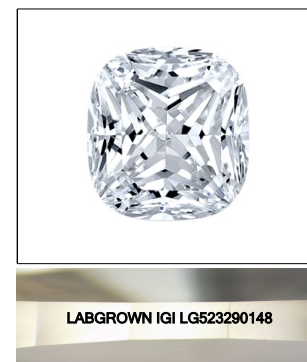


KEY TO SYMBOLS

Red symbols indicate internal characteristics.
Green symbols indicate external characteristics.

GRADING SCALES

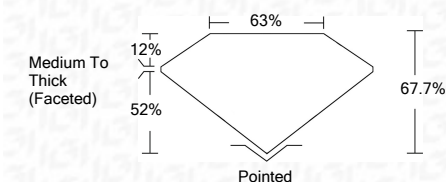
COLOR GRADING SCALE	CL	NC	FT	VL	LT	
	COLORLESS D-F	NEAR COLORLESS G-J	FAINT K-M	VERY LIGHT N-R	LIGHT S-Z	
CLARITY (10x) GRADING SCALE	FL	IF	VVS	VS	SI	I
	FLAWLESS INTERNALLY FLAWLESS	VERY VERY SLIGHTLY INCLUDED	VERY SLIGHTLY INCLUDED	SLIGHTLY INCLUDED	INCLUDED	



LASERSCRIBESM

Sample Image Used

April 14, 2022	
IGI Report Number	LG523290148
Description	LABORATORY GROWN DIAMOND
Shape and Cutting Style	SQUARE CUSHION BRILLIANT
Measurements	6.68 X 6.66 X 4.51 MM
GRADING RESULTS	
Carat Weight	1.52 CARAT
Color Grade	H
Clarity Grade	VS 1



ADDITIONAL GRADING INFORMATION	
Polish	EXCELLENT
Symmetry	EXCELLENT
Fluorescence	NONE
Inscription(s)	LABGROWN IGI LG523290148

Comments: This Laboratory Grown Diamond was created by Chemical Vapor Deposition (CVD) growth process and may include post-growth treatment.
Type IIa



IGI

April 14, 2022	IGI Report No. LG523290148	1.52 CARAT	H
	SQUARE CUSHION BRILLIANT		VS 1
	6.68 X 6.66 X 4.51 MM	67.7%	63%
	Carat Weight	Medium To Thick (Faceted)	Pointed
	Color Grade	EXCELLENT	EXCELLENT
	Clarity Grade	EXCELLENT	EXCELLENT
	Depth	NONE	NONE
	Table	LABGROWN IGI	LABGROWN IGI
	Girdle	LG523290148	LG523290148
	Culet		
	Polish		
	Symmetry		
	Fluorescence		
	Inscription(s)		
	Comments:		

This Laboratory Grown Diamond was created by Chemical Vapor Deposition (CVD) growth process and may include post-growth treatment.
Type IIa

