



526258266

DIAMOND REPORT **ELECTRONIC COPY**

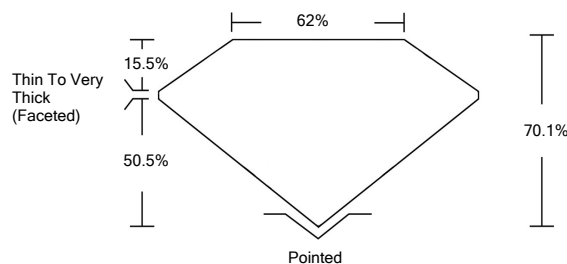
June 13, 2022
 IGI Report Number 526258266
 Description NATURAL DIAMOND
 Shape and Cutting Style CUSHION MODIFIED BRILLIANT
 Measurements 5.76 x 5.41 x 3.79 mm

GRADING RESULTS
 Carat Weight 1.00 CARAT
 Color Grade K
 Clarity Grade SI 2

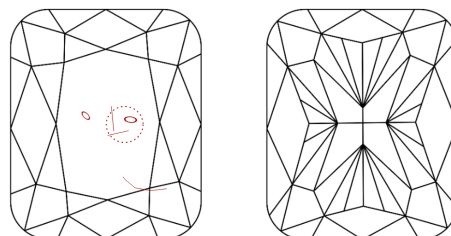
ADDITIONAL GRADING INFORMATION
 Polish - Symmetry VERY GOOD
 Proportions VERY GOOD
 Fluorescence NONE
 Inscription(s) IGI 526258266



PROPORTIONS

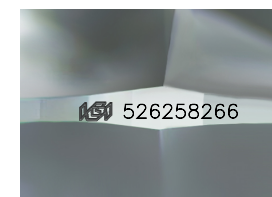


CLARITY CHARACTERISTICS



KEY TO SYMBOLS

Red symbols indicate internal characteristics.
 Green symbols indicate external characteristics.



Sample Image Used

COLOR

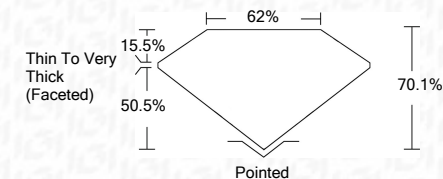
D - F	G - J	K - M	N - R	S - Z	FANCY
Colorless	Near Colorless	Slightly Tinted	Very Light Color	Light Color	

CLARITY

IF	VS ¹⁻²	VS ¹⁻²	SI ¹⁻²	I ¹⁻³
Internally Flawless	Very Very Slightly Included	Very Slightly Included	Slightly Included	Included



June 13, 2022
 IGI Report Number 526258266
 Description NATURAL DIAMOND
 Shape and Cutting Style CUSHION MODIFIED BRILLIANT
 Measurements 5.76 x 5.41 x 3.79 mm
GRADING RESULTS
 Carat Weight 1.00 CARAT
 Color Grade K
 Clarity Grade SI 2



ADDITIONAL GRADING INFORMATION

Polish - Symmetry VERY GOOD
 Proportions VERY GOOD
 Fluorescence NONE
 Inscription(s) IGI 526258266



IGI

June 13, 2022
 IGI Report No 526258266
 NATURAL DIAMOND
 CUSHION MODIFIED BRILLIANT
 5.76 x 5.41 x 3.79 mm
 Carat Weight 1.00 CARAT
 Color Grade K
 Clarity Grade SI 2
 Depth 70.1%
 Table 62%
 Girdle Thin To Very Thick (Faceted)
 Culet Pointed
 Pol - Sym VERY GOOD
 Proportions VERY GOOD
 Fluorescence NONE
 Inscription(s) IGI 526258266